

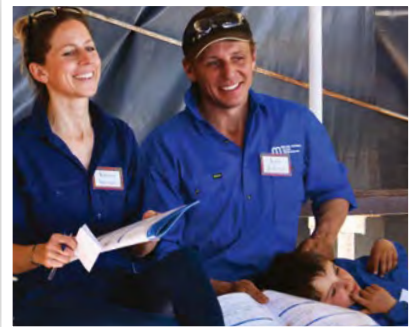


FRIDAY 16 SEPTEMBER 2022

55th ANNUAL **BULL SALE**
2022 SALE CATALOGUE

50 BULLS FOR SALE

WEEBOLLABOLLA ANNUAL BULL SALE 2021



Welcome to our 55th Annual Bull Sale



The Weebollabolla genetics are focused on self-replacing herds to return maximum profit per hectare with minimal management. A correct balance of the core traits for fertility, calving ease, carcass weight and ensuring beef of the highest quality are characteristic to our herd backed up by structure for breeding longevity.

Our R Bulls were the last cohort to be affected by drought and were early weaned on December 8th 2020. The focus of the 2019 joining was to stabilize and propagate those genetics which performed best. Lomu L8's influence is blatant. We are extremely pleased with his sons and daughters and will continue to work hard in improving areas such as marbling.

As a demonstration of our confidence and belief in our breeding program we continue to join our yearling bulls, amongst selected proven genetics. We reserve the right to collect semen or use any bulls in the draft for in herd use. This earlier data adds extra accuracy and faster long-term genetic gain. Due to the depth of our 2023 bull sale draft we are providing our clients the opportunity to access a portion of these genetics in our 2022 Sale.

Of note based on structure and phenotype alone, Dick Whale's (DW) top picks in the R Bulls are Lots 6 and Lot 29 and in the S Bulls Lots 42 and 50. We are very pleased with the quality of both lots with potential 2023 sale topping bulls in the special selection of S Bulls on offer.

2023 marks 150 years of the Munro Family's association to Weebollabolla and 155 years with Shorthorn cattle—the property was purchased with 500 Shorthorn cows bred by the Hall Bros from Scone who shifted the cattle to Moree due to severe drought - their bloodlines deriving from the Lee Family of Bylong.

As a supplier of beef genetics for nearly 150 years on Weebollabolla we are very aware of the challenging balance between targeting traits imperative to a self-replacing herd, pushing performance in terms of kilos and ensuring a delicious dining experience for the consumer.

EBVs should always be used in conjunction with visual assessment. Having an independent structural assessment allows extra confidence if unable to attend our sale and buying online.

We have engaged Elite Livestock Auctions to service any online bidders.

Footage of the bulls will be taken by Ben Hooper from Clear Vision Imaging and available early(ish) in September. Photos in this catalogue were taken 31st July. R bulls were semen tested on June 6th and S Bulls will be on August 17th. We will scan all S Bulls on September 12th, 2022, to ensure we do not miss out on collecting invaluable data.

These bulls have been managed for commercial conditions in a large contemporary group, weighed from birth, DNA SireTraced, tested for the Homozygous Poll gene (except S Bulls), independently assessed for structure, stature, capacity, body length, muscle score, do-ability, sheath, hair type, docility and overall grade, semen tested and scrotal measured twice and scanned for fat and muscle. A herd which maintains a 4.5 credit star rating with breedplan through sheer hardwork and diligence to provide accurate EBVs behind them- you can buy online with confidence or attend our Sale on Friday 16 September 1pm at Moree.

A BBQ will be available to buyers and bio-security measures in place, we will provide up to date info via email regarding COVID-19 or anything else as required. Take care and thank you for considering Weebollabolla genetics.

Jen and Sandy and the team at Weebollabolla.

CONTACTS

WEEBOLLABOLLA

JEN JEFFREYS

M. 0427 700 244

E. jen.munro@weebollabolla.com.au

SANDY MUNRO

M. 0429 700 244

E. sandy.munro@weebollabolla.com.au

DAVE WATTS

M. 0419 580 947

E. office@weebollabolla.com.au

SALES



SELLING AGENTS

BRIAN KENNEDY M. 0427 844 047

LINCOLN McKINLAY M. 0419 239 963

BRUCE SHEPPARD M. 0428 531 883

PAUL JAMESON M. 0428 667 998

ANDREW MEARA M. 0427 210 634

BLAKE MUNRO M. 0428 862 469

MICHAEL SMITH M. 0428 541 711

BEN HISCOX M. 0429 669 313

BOB JAMIESON M. 0428 669 313

SCOTT FITZGERALD M. 0455 669 310

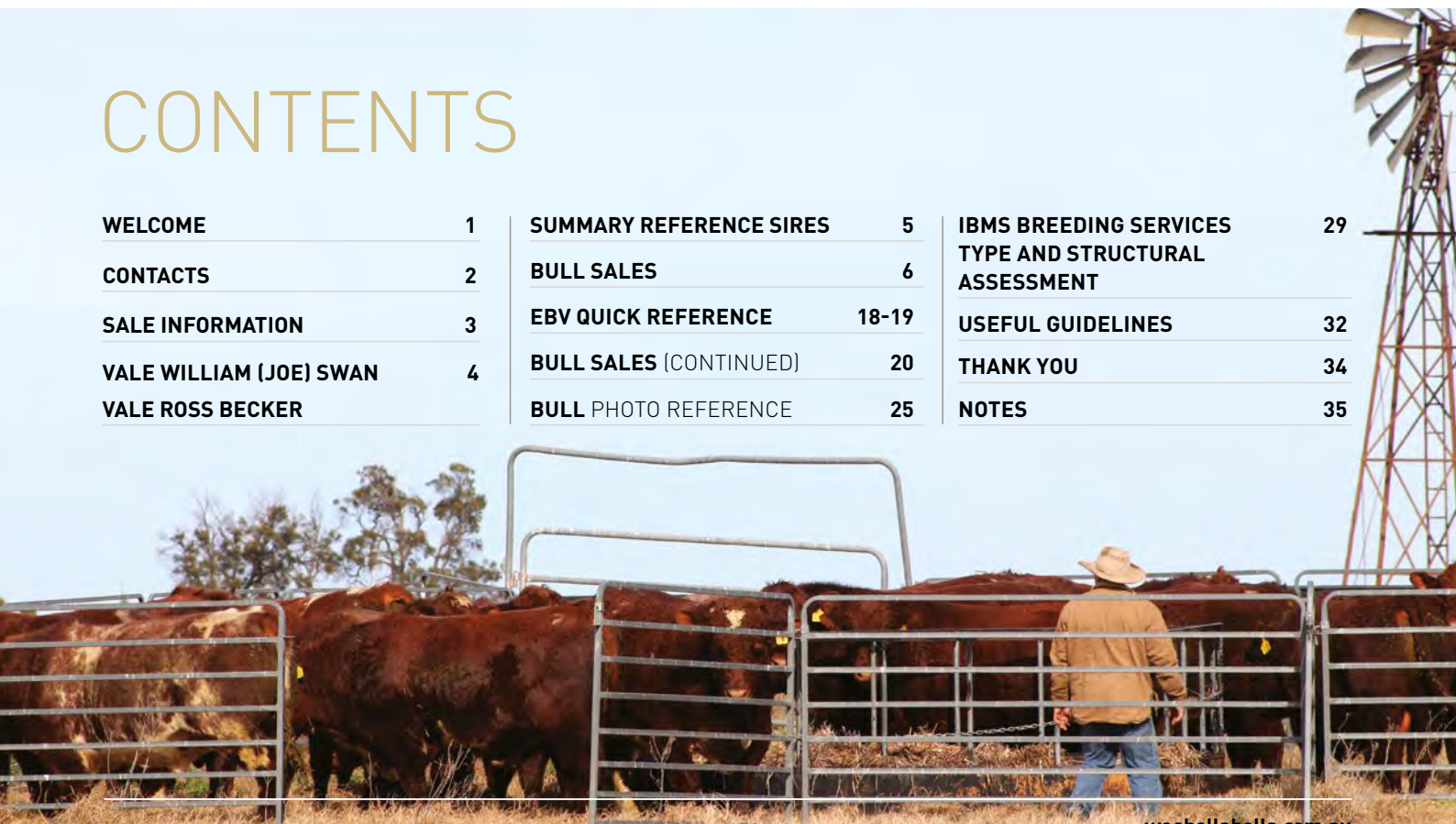
KEIRAN TE VELDE M. 0427 669 097

bj | **BOB JAMIESON AGENCIES**
Stock & Station Agents



CONTENTS

WELCOME	1	SUMMARY REFERENCE SIRES	5	IBMS BREEDING SERVICES	29
CONTACTS	2	BULL SALES	6	TYPE AND STRUCTURAL ASSESSMENT	
SALE INFORMATION	3	EBV QUICK REFERENCE	18-19	USEFUL GUIDELINES	32
VALE WILLIAM (JOE) SWAN	4	BULL SALES (CONTINUED)	20	THANK YOU	34
VALE ROSS BECKER		BULL PHOTO REFERENCE	25	NOTES	35



SALE INFORMATION

DIRECTIONS

From Moree take the Gwydir Highway (Inverell Road) and travel 3.2km after the 100km speed zone (next to Weebolla Bulls Rugby Fields). Turn right onto Terry Hie Hie road. Travel another 2km, Weebollabolla sale complex is on your right.

From Inverell heading West Turn left at Terry Hie Hie sign and travel 2km the sale complex is on your right. If you hit the Weebolla Bulls Rugby Fields you missed the turn off.

INSPECTION

Cattle will be available for inspection from 9.00am on the morning of the sale. Inspections are most welcome prior to the sale, please contact **Dave 0419 580 947** to arrange a time.

START TIME

1pm sharp.

BREEDING GUARANTEE

Our bulls have a breeding guarantee. Any issues please contact **Jen 0427 700 244** or **Dave 0419 580 947**.

REBATE

A rebate of 4% to outside agents and 1% to those who do not attend the sale.

BUYER INSTRUCTION SLIP

No verbal instructions will be accepted. In the interest of buyers all instructions concerning the delivery of stock purchased at this sale must be given in writing and signed by the buyer or their representative.

ACCOMMODATION

We recommend the following:
Spa Village Travel Inn - 02 6752 4033
Albert Motel - 02 6751 1040.

INSURANCE

Representatives will be available. We do recommend insurance for at least the first joining ie 6 months particularly for expensive bulls in the case of an unforeseen accident.

FREIGHT

We will deliver free to major Regional centres.

REFRESHMENTS

Morning tea will be available from 10am and our famous Weebollabolla steak and drinks will be provided from 11am. COVID-19 social distancing rules to be adhered to.

MANAGEMENT

2022 Sale Draft were finished on oat crop. Dick Whale assessed bulls 15/05/2022, Peter Brown semen tested 06/06/2022.

Bulls photographed 31/07/2022, filmed 19/08/2022. Bulls final weight will be taken in September as well as scrotal measured for S Bulls 12/09/2022.

In 2022 all bulls have been treated for lice with incarcerate and received 7 in 1 booster and both vibrio and pestiguard shots.

SAFETY AROUND BULLS

Reminder visitors enter the cattle pens at their own risk. Children are not permitted to enter the pens.

All the sale bulls have been assessed for temperament and are quiet to handle under normal circumstances. However, they are used to being in a large contemporary group and we cannot predict nor guarantee their behaviour on Sale Day. Be especially alert for bulls fighting. We do not expect the bulls to be aggressive with humans, but sale day places abnormal pressure on them as they experience an entirely foreign environment. Please do not crowd the bulls or loiter inside the pens. Even the quietest of bull is an unpredictable animal.

DISCLAIMER

Whilst all care and attention to detail has been made in accurately compiling this catalogue, neither the vendor, selling agents or representatives will assume any responsibility for the correctness, use or interpretation of information included in this sale catalogue.

We reserve the right to use semen either already collected or when convenient for new owner to collect.

WE'RE ONLINE

Elite Livestock Auctions please familiarise yourself with login and registration process. Videos of sample lots will be available on Bulls at

Elite Livestock

elitelivestockauctions.com.au

Follow us on Facebook and Instagram - Weebollabolla Shorthorns or visit our webpage weebollabolla.com.au to view latest news and sign up to our mailing list ensuring you don't miss out on any updates.

Follow us  



VALE WILLIAM (JOE) SWAN

A few words from Sandy...

Only a few years older than I, he was both a mate and trusted colleague of the AGF Munro Partnership and later of Norland Pastoral Ply Ltd (Weebollabolla) for 40 years.

He was a great storyteller with canny twists and sayings that I shall never forget, such as

boogilars, a term I still use when referencing bulls' testicles. I enjoyed his company and views on many aspects of life, both first Australians and his fellow countrymen and colleagues. He was an excellent stockman. Cool of temperament and ever watchful. I personally remember in my early years when attending horses at the stables adjacent to the cottage where he and his young family lived for many years, the booming restrains of Sesame Street emanating from the house. "Gotta learn yah 2 times tables" - he always said. I was very sad when he announced to me he was leaving on account of his advancing age and severe arthritis moving in and he felt he wasn't carrying his weight - not true... he had a job for life as far as I was concerned.



VALE ROSS BECKER

Ross was a highly valued member of the team, he had high expectations of himself.

He was very committed to his role, maintained a strong work ethic and a huge passion for agriculture, particularly cattle - he loved

Weebollabolla Jackpot J87. Ross had a very dry sense of humour.

We know Weebollabolla held a very special place in Ross' heart, as he does in ours and will not be forgotten by the Munro family nor those that knew him from within the Norland Pastoral team.

Ross passed away on 19th March 2022 from the devastating disease - Motor Neurone Disease.

Visit mndaustralia.org.au for more information or to donate to this cause.

SUMMARY REFERENCE SIRES

SIRE NAME	IDENTITY	Date of Birth (DOB)	Calving Ease DIR (%)	Calving Ease DTRS (%)	Gestation Length (days)	Est Birth Wt. (kg)	200 Day Wt. (kg)	400 Day Wt. (kg)	600 Day Wt. (kg)	Mat. Cow Wt. (kg)	Milk (kg)	Scrotal Size (cm)	Days to Calving (days)	Car-case Wt. (kg)	Eye Muscle Area (sq.cm)	Rib Fat (mm)	Rump Fat (mm)	Retail Beef Yield (%)	IMF (%)	Docility	Index (\$)	SIRED LOTS
WEEBOLLABOLLA JACKPOT J87 (S) (Red)	AGFJ87	14/7/13	-5.3	2.8	-1.1	3	24	52	71	101	0	2.1	3.2	51	4.6	-2.1	-3.3	2.9	0.4	14	\$57	1
WEEBOLLABOLLA LOMU L8 (P) (AI) (Roan)	AGFL8	1/6/15	6.6	3.5	-4.3	1	35	41	55	59	3	1.2	-2.5	43	3.7	-0.1	-0.3	1	0.6	-6.6	\$80	17
WEEBOLLABOLLA MUNRO'S LUCK M100 (P) (AI) (Red)	AGFM100	16/7/16	-0.2	3	-1.9	2.5	27	54	77	111	3	1.4	0.5	56	4.9	-1.2	-2.2	1.7	0.8	4	\$74	42
WEEBOLLABOLLA MURTONGA M18 (P) (AI) (Red)	AGFM18	7/6/16	3.2	0	-2.4	3.7	38	43	61	65	10	2.2	-2.7	45	4	0.5	0.9	0.4	0.7	-8.6	\$66	14, 15, 16, 20, 25, 43
WEEBOLLABOLLA PLATFORM P13 (P) (AI) (Red)	AGFP13	7/6/18	4.2	1.4	-3.7	2	39	41	51	47	6	0.9	-2.1	42	2.9	0.5	0.6	0.1	0.9	4.5	\$70	12, 18, 26, 34
WEEBOLLABOLLA PLAYER P136 (P) (Roan)	AGFP136	21/7/18	-4		0.4	5.1	35	57	68	73	9	2.7	-0.6	50	3.3	-0.8	-0.5	0.8	0.5	7.8	\$45	21
WEEBOLLABOLLA PADDINGTON P23 (P) (AI) (Red)	AGFP23	10/6/18	5.7	3.8	-2.7	-0.5	20	30	47	55	6	0.7	-1.4	41	3.1	0.5	0.4	-0.3	1.2	9.3	\$58	44
WEEBOLLABOLLA PISTON P24 (P) (AI) (Red Little White)	AGFP24	11/6/18	4.7	1.4	-2.9	1.9	27	39	55	69	-1	2.5	-2.3	40	3.8	-0.4	-0.5	1	0.6	2.9	\$75	22, 33, 36, 37
WEEBOLLABOLLA PHILLIP P30 (P) (AI) (Roan)	AGFP30	12/6/18	7.2	3.1	-4.4	-0.1	29	34	38	30	6	1.8	-2.3	36	2.9	-0.2	-0.4	0.8	0.3	5.2	\$57	7, 24, 32
WEEBOLLABOLLA PROVERB P35 (P) (AI) (Roan)	AGFP35	14/6/18	-1.9	-0.8	-3	5	47	63	80	84	6	2.5	-2.9	55	4.6	-0.9	-1.3	1.8	0.2	2.2	\$79	4, 5, 6, 8, 27, 29
WEEBOLLABOLLA PEARSALL P41 (P) (AI) (Red)	AGFP41	18/6/18	-0.8	-0.7	-1.7	5.5	47	54	71	68	8	1	-2.3	47	3.9	1.2	1.7	0.1	0.9	-6.9	\$72	19, 28, 38
WEEBOLLABOLLA PACKER P9 (S) (AI) (Roan)	AGFP9	5/6/18	4.1	0.2	-4.6	3.2	48	59	79	72	7	2.1	-2.4	60	3.3	-1.5	-2.1	2.1	0.1	3.2	\$84	2, 3, 9, 10, 13, 30, 35
THE GROVE K0182 (P) (Red)	BDBK0182	18/8/14	4.9	4.4	-3	3.1	35	51	76	80	10	3.3	-2.2	58	5.7	-2.2	-3.2	3.5	-0.2	-1.9	\$87	40
THE GROVE L0247 (P) (Red)	BDBL0247	12/9/15	-0.5	-6.5	-2.1	4.1	42	47	66	62	-1	1.9	-0.4	47	4	0.4	0.2	-0.3	1.4	18	\$67	50
THE GROVE TERABYTES M0661 (P) (AI) (Red)	BDBM0661	4/9/16	-0.6	1.5	-1.1	3.9	28	48	65	87	12	1.8	-1.5	50	5.5	0.2	0.2	0.6	1.6	-12.1	\$73	31
THE GROVE ASHES Q0195 (P) (AI) (Red)	BDBG0195	12/2/19	-2.3	1.6	-2.9	4.4	38	48	60	61	9	1.8	-1.7	41	4	-0.3	-0.6	0.8	0.9	15.3	\$63	48
TURANVILLE P13 (P) (AI) (Roan)	DRRP013	20/3/18	-15.2	-3.3	-3.1	6	47	59	78	95	6	3.1	-3.3	49	4.6	-0.1	-0.5	0.6	1.1	-16.3	\$46	11, 39, 49
TURANVILLE MINISTER Q27 (P) (Roan)	DRRQ027	1/4/19	0	0	-1.5	3.6	31	41	58	62	8	2	-1.3	40	3.3	-0.2	-0.3	0.4	1.4	14	\$64	45
SPRYS BOOM TIME M222 (P) (AI) (Red)	GLSM222	7/8/16	0.4		-0.6	2.9	25	31	38												\$33	41
ROYALLA ROMEO K267 (P) (AI) (Red Little White)	JSNK267	30/7/14	5.3	3.8	-2.9	1.2	28	35	42	23	11	1.7	0	38	2.9	-0.1	0.1	0.6	0.8	0	\$54	23
SOUTHCOTE LEADFOOT L13 (S) (Red)	SC L13	19/6/15	-4.4	-2.9	0.4	3.9	30	39	45	27	6	1.6		35	3.1	-0.4	-0.4	0.7	0.6	8.1	\$36	46, 47

■ Top 5% EBVs and Indices ■ Top 10% EBVs and Indices ■ Top 30% EBVs and Indices ■ MCW less than 600 day growth

LOT 1 WEEBOLLABOLLA ROMA R23 (P) (AI) (RED)

BORN:	06/07/2020	WEEBOLLABOLLA FINLAY F120 (S) (RED)	YAMBURGAN ZEUS H140 (P) (P) (RED)
COLOUR:	Red	SIRE: WEEBOLLABOLLA JACKPOT J87 (S) (RED)	DAM: WEEBOLLABOLLA ADELAIDE M4 (P) (AI) (RED)
IDENTITY:	AGFR23	WEEBOLLABOLLA CIRROCUMULUS C117 (P) (RED)	WEEBOLLABOLLA ADELAIDE K47 (P) (RED LITTLE WHITE)

TRAITS OBSERVED: CE,BWT,200WT(X2),600WT(X2),SS,FAT,EMA,IMF

JULY 2022 PERFORMANCE HERDS AUSTRALIA BREEDPLAN

CED	CEM	GL	BW	200	400	600	MCW	MILK	SS	DTC	CWT	EMA	RIB	P8	RBV	IMF	Index
-5.7	-0.1	-0.8	+4.8	+33	+50	+66	+73	+4	+2.6	+0.4	+44	+4.1	-1.1	-1.7	+2.0	+0.3	+\$51
43%	31%	51%	76%	73%	69%	+66	63%	51%	73%	34%	62%	53%	60%		57%	52%	

Structural Assessment	Stature	Capacity	Body Length	Front Feet	Back Feet	Leg Angle	Pastern Angle	Muscle	Do-ability	Sheath	Hair Type	Docility	Grade	Scrotal 6/6/22
	28	38	32	23	24	25	24	38	32	4	3	1	5	38

Jackpot J87 progeny are all about weight, big scrotal and beautiful temperament, Roma R23 is a textbook example. His dam Adelaide M4 is also the dam of Phillip P30 who sired Lots 7, 24 and 30 in this year's draft.

LOT 1 PURCHASER:

NOTES:

\$

LOT 2 WEEBOLLABOLLA ROCK N ROLL R16 (P) (AI) (RED)

BORN:	04/07/2020	WEEBOLLABOLLA LOMU L8 (P) (AI) (ROAN)	YAMBURGAN OSSIE G10 (P) (P) (RED)
COLOUR:	Red	SIRE: WEEBOLLABOLLA PACKER P9 (S) (AI) (ROAN)	DAM: WEEBOLLABOLLA CHA CHA J67 (P) (RED)
IDENTITY:	AGFR16	WEEBOLLABOLLA BLIZZARD M22 (P) (AI) (RED)	WEEBOLLABOLLA CHA CHA C32 (P) (RED)

TRAITS OBSERVED: CE,BWT,200WT(X2),400WT,600WT(X2),SS,FAT,EMA,IMF

JULY 2022 PERFORMANCE HERDS AUSTRALIA BREEDPLAN

CED	CEM	GL	BW	200	400	600	MCW	MILK	SS	DTC	CWT	EMA	RIB	P8	RBV	IMF	Index
+5.1	+1.4	-4.9	+2.7	+44	+60	+85	+99	+5	+2.3	-1.4	+61	+3.5	-1.9	-2.6	+2.0	+0.3	+\$87
39%	28%	47%	74%	71%	69%	+85	60%	43%	72%	34%	60%	49%	58%	58%	55%	48%	

Structural Assessment	Stature	Capacity	Body Length	Front Feet	Back Feet	Leg Angle	Pastern Angle	Muscle	Do-ability	Sheath	Hair Type	Docility	Grade	Scrotal 6/6/22
	29	38	34	23	24	27	23	38	31	4	1	2	6	39

Rock n Roll R16 42kg born finds himself in the Top 1% index due to his Gestation being in the top 1%, 600DW and top 5% for 200DW, 400DW, carcass weight and top 10% for CED. R16's half sister, L5, is as a donor cow and produced S44 Lot 41.

LOT 2 PURCHASER:

NOTES:

\$

LOT 3 WEEBOLLABOLLA RUPERT R78 (H) (RED)

BORN:	22/07/2020	WEEBOLLABOLLA LOMU L8 (P) (AI) (ROAN)	WEEBOLLABOLLA GOODAR G105 (P) (AI) (RED & WHITE)
COLOUR:	Red	SIRE: WEEBOLLABOLLA PACKER P9 (S) (AI) (ROAN)	DAM: WEEBOLLABOLLA CIRROCUMULUS N38 (P) (AI) (RN)
IDENTITY:	AGFR78	WEEBOLLABOLLA BLIZZARD M22 (P) (AI) (RED)	WEEBOLLABOLLA CIRROCUMULUS L108 (P) (RED)

TRAITS OBSERVED: CE,BWT,200WT(X2),400WT,600WT(X2),SS,FAT,EMA,IMF

JULY 2022 PERFORMANCE HERDS AUSTRALIA BREEDPLAN

CED	CEM	GL	BW	200	400	600	MCW	MILK	SS	DTC	CWT	EMA	RIB	P8	RBV	IMF	Index
+4.4	+2.9	-4.0	+2.7	+44	+55	+68	+54	+12	+1.3	-1.3	+52	+3.8	+0.0	0.0	+0.7	+0.5	+\$71
37%	29%	46%	73%	70%	68%	+68	58%	39%	71%	30%	59%	48%	58%	57%	54%	47%	

Structural Assessment	Stature	Capacity	Body Length	Front Feet	Back Feet	Leg Angle	Pastern Angle	Muscle	Do-ability	Sheath	Hair Type	Docility	Grade	Scrotal 6/6/22
	23	39	27	23	24	26	23	42	32	4	1	1	6	35

A standout bull from the beginning. Rupert R78 has a very balanced set of traits, temperament, excellent cover, hair type and clean sheath.

LOT 3 PURCHASER:

NOTES:

\$

LOT 4 WEEBOLLABOLLA RAYMOND R24 (P) (AI) (ROAN) HOMOZYGOUS POLL *zoetis*

BORN:	06/07/2020	WEEBOLLABOLLA LOMU L8 (P) (AI) (ROAN)	YAMBURGAN GRISSOM G31 (P) (AI) (P) (AI) (RED)
COLOUR:	Roan	SIRE: WEEBOLLABOLLA PROVERB P35 (P) (AI) (ROAN)	DAM: WEEBOLLABOLLA DAWN L211 (P) (AI) (RED)
IDENTITY:	AGFR24	WEEBOLLABOLLA KYLIE M196 (H) (RED)	WEEBOLLABOLLA DAWN J97 (P) (RED)

TRAITS OBSERVED: CE,BWT,200WT(X2),400WT,600WT(X2),SS,FAT,EMA,IMF JULY 2022 PERFORMANCE HERDS AUSTRALIA BREEDPLAN

CED	CEM	GL	BW	200	400	600	MCW	MILK	SS	DTC	CWT	EMA	RIB	P8	RBY	IMF	Index
-0.5		-2.0	+3.8	+39	+51	+70	+70	+7	+2.3	-1.7	+53	+4.4	-1.5	-2.0	+2.4	+0.0	+\$70
35%		47%	74%	70%	68%	+70	58%	39%	69%	25%	58%	44%	53%	53%	50%	42%	

Structural Assessment	Stature	Capacity	Body Length	Front Feet	Back Feet	Leg Angle	Pastern Angle	Muscle	Do-ability	Sheath	Hair Type	Docility	Grade	Scrotal 6/6/22
		28	38	32	23	24	26	23	38	32	4	2	2	6

Homozygous Poll this roan bull is the first of many excellent Proverb P35 sons, Raymond R24, has a lovely temperament with tremendous weight.

LOT 4 PURCHASER: _____ NOTES: _____
\$ _____

LOT 5 WEEBOLLABOLLA ROLEY R87 (P) (RED) HOMOZYGOUS POLL *zoetis*

BORN:	25/07/2020	WEEBOLLABOLLA LOMU L8 (P) (AI) (ROAN)	WOOLCOTT H287 (P) (RED)
COLOUR:	Red	SIRE: WEEBOLLABOLLA PROVERB P35 (P) (AI) (ROAN)	DAM: WEEBOLLABOLLA ARDULLIE L314 (P) (RED)
IDENTITY:	AGFR87	WEEBOLLABOLLA KYLIE M196 (H) (RED)	WEEBOLLABOLLA ARDULLIE F582 (P) (RED)

TRAITS OBSERVED: CE,BWT,200WT(X2),400WT,600WT(X2),SS,FAT,EMA,IMF JULY 2022 PERFORMANCE HERDS AUSTRALIA BREEDPLAN

CED	CEM	GL	BW	200	400	600	MCW	MILK	SS	DTC	CWT	EMA	RIB	P8	RBY	IMF	Index
-2.2		-1.7	+5.9	+43	+62	+83	+84	+2	+2.8	-1.6	+52	+4.0	-0.6	-1.1	+1.3	+0.5	+\$72
37%		44%	74%	70%	68%	+83	57%	42%	62%	30%	58%	43%	52%	53%	49%	43%	

Structural Assessment	Stature	Capacity	Body Length	Front Feet	Back Feet	Leg Angle	Pastern Angle	Muscle	Do-ability	Sheath	Hair Type	Docility	Grade	Scrotal 6/6/22
		23	38	27	23	24	26	23	39	33	5	2	2	6

Homozygous Poll. Roley R87 is another complete bull with an excellent temperament, structure and weight for age.

LOT 5 PURCHASER: _____ NOTES: _____
\$ _____

LOT 6 WEEBOLLABOLLA RANDY R20 (P) (AI) (RED) HOMOZYGOUS POLL *zoetis*

BORN:	05/07/2020	WEEBOLLABOLLA LOMU L8 (P) (AI) (ROAN)	THE GROVE L0247 (P) (RED)
COLOUR:	Red	SIRE: WEEBOLLABOLLA PROVERB P35 (P) (AI) (ROAN)	DAM: WEEBOLLABOLLA BEAUTY P284 (P) (RED)
IDENTITY:	AGFR20	WEEBOLLABOLLA KYLIE M196 (H) (RED)	WEEBOLLABOLLA BEAUTY L10 (P) (AI) (RED)

TRAITS OBSERVED: CE,BWT,200WT(X2),400WT,600WT(X2),SS,FAT,EMA,IMF JULY 2022 PERFORMANCE HERDS AUSTRALIA BREEDPLAN

CED	CEM	GL	BW	200	400	600	MCW	MILK	SS	DTC	CWT	EMA	RIB	P8	RBY	IMF	Index
-2.1	-4.4	-3.2	+4.3	+47	+60	+76	+85	+7	+2.4		+53	+3.6	+0.5	+0.6	+0.0	+0.8	+\$67
37%	25%	45%	74%	69%	63%	+76	52%	38%	43%		51%	35%	45%	45%	42%	40%	

Structural Assessment	Stature	Capacity	Body Length	Front Feet	Back Feet	Leg Angle	Pastern Angle	Muscle	Do-ability	Sheath	Hair Type	Docility	Grade	Scrotal 6/6/22
		27	40	32	23	24	27	23	40	32	5	2	1	7

Homozygous Poll. Not intentional, nevertheless, the third Proverb P35 son to appear and we are only up to Lot 6. The most aesthetically pleasing bull for us. Dick Whale (DW) agreed by grading Randy R20 as a 7. This bull has plenty of punch.

LOT 6 PURCHASER: _____ NOTES: _____
\$ _____

LOT 7 WEEBOLLABOLLA RELF R266 (P) (ROAN) HOMOZYGOUS POLL *zoetis*

BORN:	09/09/2020	WEEBOLLABOLLA LOMU L8 (P) (AI) (ROAN)	WEEBOLLABOLLA KNEIPP K9 (P) (AI)
COLOUR:	Roan	SIRE: WEEBOLLABOLLA PHILLIP P30 (P) (AI) (ROAN)	DAM: WEEBOLLABOLLA VICTORIA M140 (P) (RED)
IDENTITY:	AGFR266	WEEBOLLABOLLA ADELAIDE M4 (P) (AI) (RED)	WEEBOLLABOLLA COW

TRAITS OBSERVED: 200WT(X2),400WT,600WT(X2),SS,FAT,EMA,IMF JULY 2022 PERFORMANCE HERDS AUSTRALIA BREEDPLAN

CED	CEM	GL	BW	200	400	600	MCW	MILK	SS	DTC	CWT	EMA	RIB	P8	RBY	IMF	Index
+5.8	+4.4	-3.1	+0.2	+27	+34	+35	+27	+7	+1.3	-3.4	+38	+3.0	-0.5	-0.7	+1.0	+0.4	+\$65
37%	26%	41%	63%	68%	62%	+35	53%	44%	48%	30%	53%	37%	47%	47%	44%	41%	

Structural Assessment	Stature	Capacity	Body Length	Front Feet	Back Feet	Leg Angle	Pastern Angle	Muscle	Do-ability	Sheath	Hair Type	Docility	Grade	Scrotal 6/6/22
	25	38	28	23	24	26	23	38	31	5	2	2	6	41

Homozygous Poll. Relf R266 is a very stylish easy doing roan.

LOT 7 PURCHASER: _____ NOTES: _____
\$ _____

LOT 8 WEEBOLLABOLLA RJ R19 (P) (AI) (RED)

BORN:	04/07/2020	WEEBOLLABOLLA LOMU L8 (P) (AI) (ROAN)	YAMBURGAN ZEUS H140 (P) (P) (RED)
COLOUR:	Red	SIRE: WEEBOLLABOLLA PROVERB P35 (P) (AI) (ROAN)	DAM: WEEBOLLABOLLA ULLMARA M31 (P) (AI) (RED)
IDENTITY:	AGFR19	WEEBOLLABOLLA KYLIE M196 (H) (RED)	WEEBOLLABOLLA ULLMARA K91 (P) (RED & WHITE)

TRAITS OBSERVED: CE,BWT,200WT(X2),600WT(X2),SS,FAT,EMA,IMF JULY 2022 PERFORMANCE HERDS AUSTRALIA BREEDPLAN

CED	CEM	GL	BW	200	400	600	MCW	MILK	SS	DTC	CWT	EMA	RIB	P8	RBY	IMF	Index
-5.0	-3.1	-1.9	+5.5	+44	+56	+75	+83	+7	+2.6	-3.0	+50	+4.3	-0.6	-0.8	+1.4	+0.2	+\$59
37%	25%	47%	74%	70%	65%	+75	59%	39%	69%	28%	58%	46%	56%	56%	52%	45%	

Structural Assessment	Stature	Capacity	Body Length	Front Feet	Back Feet	Leg Angle	Pastern Angle	Muscle	Do-ability	Sheath	Hair Type	Docility	Grade	Scrotal 6/6/22
	28	38	32	23	24	25	24	38	30	3	2	2	5	40

Another Proverb P35 son with excellent growth and length. RJ R19 also has the structure to carry himself with ease.

LOT 8 PURCHASER: _____ NOTES: _____
\$ _____

LOT 9 WEEBOLLABOLLA RIVER R66 (P) (ROAN)

BORN:	21/07/2020	WEEBOLLABOLLA LOMU L8 (P) (AI) (ROAN)	MARELLAN OSTENTATIOUS G404
COLOUR:	Roan	SIRE: WEEBOLLABOLLA PACKER P9 (S) (AI) (ROAN)	DAM: WEEBOLLABOLLA QUIVER M119 (P) (AI) (WHITE)
IDENTITY:	AGFR66	WEEBOLLABOLLA BLIZZARD M22 (P) (AI) (RED)	WEEBOLLABOLLA QUIVER G128 (P) (AI) (ROAN)

TRAITS OBSERVED: CE,BWT,200WT(X2),400WT,600WT(X2),SS,FAT,EMA,IMF JULY 2022 PERFORMANCE HERDS AUSTRALIA BREEDPLAN

CED	CEM	GL	BW	200	400	600	MCW	MILK	SS	DTC	CWT	EMA	RIB	P8	RBY	IMF	Index
+0.1		-3.2	+4.7	+46	+56	+78	+76	+8	+1.8	-0.5	+54	+3.7	-1.4	-1.9	+2.0	+0.0	+\$68
35%		44%	73%	70%	68%	+78	59%	38%	71%	28%	57%	38%	47%	47%	45%	41%	

Structural Assessment	Stature	Capacity	Body Length	Front Feet	Back Feet	Leg Angle	Pastern Angle	Muscle	Do-ability	Sheath	Hair Type	Docility	Grade	Scrotal 6/6/22
	28	38	32	23	24	25	24	38	31	4	2	2	6	37

A striking Packer P9 son with plenty of colour in his EBVs. River R66's dam M119 produced Lot 5 in our 2021 Sale and who was graded a 7 by DW. As a yearling he was a stand out.

LOT 9 PURCHASER: _____ NOTES: _____
\$ _____

LOT 10 WEEBOLLABOLLA RELIABLE R98 (P) (ROAN)

BORN:	28/07/2020	WEEBOLLABOLLA LOMU L8 (P) (AI) (ROAN)	BELMORE JACKAROO Z109 (P) (AI) (RED LITTLE WHITE)
COLOUR:	Roan	SIRE: WEEBOLLABOLLA PACKER P9 (S) (AI) (ROAN)	DAM: WEEBOLLABOLLA DEPENDENCY H63 (P) (AI) (RED)
IDENTITY:	AGFR98	WEEBOLLABOLLA BLIZZARD M22 (P) (AI) (RED)	WEEBOLLABOLLA DEPENDENCY D30 (P) (RED)

TRAITS OBSERVED: CE,BWT,200WT(X2),400WT,600WT(X2),SS,FAT,EMA,IMF

JULY 2022 PERFORMANCE HERDS AUSTRALIA BREEDPLAN

CED	CEM	GL	BW	200	400	600	MCW	MILK	SS	DTC	CWT	EMA	RIB	P8	RBY	IMF	Index
+0.2	-4.8	-1.8	+5.1	+43	+54	+69	+53	+6	+2.4	-1.5	+49	+3.8	-1.5	-2.1	+2.0	+0.0	+\$65
38%	27%	48%	74%	71%	69%	+69	60%	44%	71%	33%	60%	48%	58%	58%	55%	48%	
Structural Assessment		Stature	Capacity	Body Length	Front Feet	Back Feet	Leg Angle	Pastern Angle	Muscle	Do-ability	Sheath	Hair Type	Docility	Grade	Scrotal 6/6/22		
		25	38	29	23	24	26	23	38	33	4	2	2	6	38		

Tremendous volume and a lovely softness to Reliable R98, his dam Dependency H63, has her third son to grade a 6 by DW and make the top ten sale lots displaying 'excellent structure, capacity and do-ability'.

LOT 10 PURCHASER:

NOTES:

\$

LOT 11 WEEBOLLABOLLA ROSS R44 (H) (RED & WHITE)

BORN:	13/07/2020	TURANVILLE INFORMER K57 (P) (AI) (RED LITTLE WHITE)	WEEBOLLABOLLA JACKPOT J87 (S) (RED)
COLOUR:	Red & White	SIRE: TURANVILLE P13 (P) (AI) (ROAN)	DAM: WEEBOLLABOLLA BUSHEL N77 (P) (ROAN)
IDENTITY:	AGFR44	TURANVILLE RIDDLE G65 (P) (AI) (ROAN)	WEEBOLLABOLLA BUSHEL K187 (P) (ROAN)

TRAITS OBSERVED: CE,BWT,200WT(X2),400WT,600WT,SS,FAT,EMA,IMF

JULY 2022 PERFORMANCE HERDS AUSTRALIA BREEDPLAN

CED	CEM	GL	BW	200	400	600	MCW	MILK	SS	DTC	CWT	EMA	RIB	P8	RBY	IMF	Index
-16.5	-2.6	-2.0	+7.4	+52	+72	+95	+111	+6	+1.9	-1.4	+62	+5.2	-0.6	-1.0	+1.7	+0.7	+\$51
37%	28%	49%	74%	71%	69%	+95	59%	40%	71%	30%	59%	48%	56%	56%	53%	45%	
Structural Assessment		Stature	Capacity	Body Length	Front Feet	Back Feet	Leg Angle	Pastern Angle	Muscle	Do-ability	Sheath	Hair Type	Docility	Grade	Scrotal 6/6/22		
		29	38	33	23	24	25	24	38	28	5	2	2	5	42		

Ross R44 covers some territory - a large meaty red and white bull, he carries himself and his condition well for his large frame. Fantastic disposition.

LOT 11 PURCHASER:

NOTES:

\$

LOT 12 WEEBOLLABOLLA ROY R120 (P) (RED)

BORN:	10/08/2020	WEEBOLLABOLLA LOMU L8 (P) (AI) (ROAN)	THE GROVE K0182 (P) (RED)
COLOUR:	Red	SIRE: WEEBOLLABOLLA PLATFORM P13 (P) (AI) (RED)	DAM: WEEBOLLABOLLA COLLEEN P225 (P) (RED)
IDENTITY:	AGFR120	WEEBOLLABOLLA BAKERY M2 (P) (AI) (RED)	WEEBOLLABOLLA COLLEEN C43 (P) (ROAN)

TRAITS OBSERVED: CE,BWT,200WT(X2),600WT(X2),SS,FAT,EMA,IMF,DOC

JULY 2022 PERFORMANCE HERDS AUSTRALIA BREEDPLAN

CED	CEM	GL	BW	200	400	600	MCW	MILK	SS	DTC	CWT	EMA	RIB	P8	RBY	IMF	Index
+6.7	+4.2	-4.4	-0.3	+28	+38	+51	+50	+8	+1.4	-0.8	+47	+4.2	-0.9	-1.4	+1.6	+0.4	+\$66
36%	26%	46%	73%	69%	65%	+51	57%	38%	71%	30%	58%	47%	55%	55%	52%	45%	
Structural Assessment		Stature	Capacity	Body Length	Front Feet	Back Feet	Leg Angle	Pastern Angle	Muscle	Do-ability	Sheath	Hair Type	Docility	Grade	Scrotal 6/6/22		
		29	38	32	23	24	26	23	38	32	4	2	2	6	38		

Roy R120 is a heifer's first calf, a very balanced solid red. The Colleen dam line have been prolific breeders. Should be suitable for heifers.

LOT 12 PURCHASER:

NOTES:

\$

LOT 13 WEEBOLLABOLLA RIVERVIEW R39 (P) (AI) (RED & WHITE)

BORN:	12/07/2020	WEEBOLLABOLLA LOMU L8 (P) (AI) (ROAN)	WEEBOLLABOLLA HALLMARK H206 (P) (RED)
COLOUR:	Red & White	SIRE: WEEBOLLABOLLA PACKER P9 (S) (AI) (ROAN)	DAM: WEEBOLLABOLLA ANGEL L75 (P) (ROAN)
IDENTITY:	AGFR39	WEEBOLLABOLLA BLIZZARD M22 (P) (AI) (RED)	WEEBOLLABOLLA ANGEL H79 (P) (AI) (ROAN)

TRAITS OBSERVED: CE,BWT,200WT(X2),600WT(X2),SS,FAT,EMA,IMF

JULY 2022 PERFORMANCE HERDS AUSTRALIA BREEDPLAN

CED	CEM	GL	BW	200	400	600	MCW	MILK	SS	DTC	CWT	EMA	RIB	P8	RBY	IMF	Index
-2.5	-3.2	-2.0	+4.6	+36	+47	+64	+69	+1	+1.7	-1.7	+47	+4.1	-0.3	-0.4	+1.3	+0.6	+\$68
37%	26%	46%	74%	71%	67%	+64	61%	42%	72%	30%	59%	48%	58%	58%	55%	48%	

Structural Assessment	Stature	Capacity	Body Length	Front Feet	Back Feet	Leg Angle	Pastern Angle	Muscle	Do-ability	Sheath	Hair Type	Docility	Grade	Scrotal 6/6/22
	28	38	31	23	24	26	23	38	32	4	2	2	5	36

Riverview R39 has a lot of presence, very shapely, easy doing bull. His dam Angel L75 breeds excellent progeny - another son for 2023, along with one of our favourite P cows - a white.

LOT 13 PURCHASER: _____ NOTES: _____
\$ _____

LOT 14 WEEBOLLABOLLA RICHIE R114 (P) (RED)

BORN:	05/08/2020	YAMBURGAN ZEUS H140 (P) (P) (RED)	WEEBOLLABOLLA JEFFREYS J226 (P) (RED)
COLOUR:	Red	SIRE: WEEBOLLABOLLA MURTONGA M18 (P) (AI) (RED)	DAM: WEEBOLLABOLLA KYLIE M196 (H) (RED)
IDENTITY:	AGFR114	WEEBOLLABOLLA NINDETHANA K200 (P) (RED)	WEEBOLLABOLLA KYLIE J2 (P) (AI) (ET) (ROAN)

TRAITS OBSERVED: CE,BWT,200WT(X2),400WT,600WT(X2),SS,FAT,EMA,IMF

JULY 2022 PERFORMANCE HERDS AUSTRALIA BREEDPLAN

CED	CEM	GL	BW	200	400	600	MCW	MILK	SS	DTC	CWT	EMA	RIB	P8	RBY	IMF	Index
+2.8	-0.1	-3.1	+2.7	+33	+42	+56	+64	+9	+2.1	-2.9	+43	+4.0	+0.2	+0.4	+0.6	+0.5	+\$62
41%	29%	50%	76%	73%	71%	+56	62%	47%	72%	33%	62%	51%	60%	60%	57%	51%	

Structural Assessment	Stature	Capacity	Body Length	Front Feet	Back Feet	Leg Angle	Pastern Angle	Muscle	Do-ability	Sheath	Hair Type	Docility	Grade	Scrotal 6/6/22
	25	38	30	23	24	26	24	39	32	5	3	2	6	37

Prepotency here, Richie R114 stood out as a yearling. He shares the same dam as sire, Proverb P35, plus he offers a balanced set of numbers, sound structure and a great temperament.

LOT 14 PURCHASER: _____ NOTES: _____
\$ _____

LOT 15 WEEBOLLABOLLA RUMBEL R45 (P) (ROAN)

HOMOZYGOUS POLL 

BORN:	13/07/2020	YAMBURGAN ZEUS H140 (P) (P) (RED)	WEEBOLLABOLLA JACKPOT J87 (S) (RED)
COLOUR:	Roan	SIRE: WEEBOLLABOLLA MURTONGA M18 (P) (AI) (RED)	DAM: WEEBOLLABOLLA VALONIA N109 (P) (ROAN)
IDENTITY:	AGFR45	WEEBOLLABOLLA NINDETHANA K200 (P) (RED)	WEEBOLLABOLLA VALONIA K255 (P) (WHITE)

TRAITS OBSERVED: CE,BWT,200WT(X2),400WT,600WT(X2),SS,FAT,EMA,IMF

JULY 2022 PERFORMANCE HERDS AUSTRALIA BREEDPLAN

CED	CEM	GL	BW	200	400	600	MCW	MILK	SS	DTC	CWT	EMA	RIB	P8	RBY	IMF	Index
+2.1	+2.3	-1.8	+2.4	+27	+36	+49	+67	+8	+1.9	-1.4	+40	+4.3	+0.5	+0.8	+0.8	+0.6	+\$58
38%	27%	48%	75%	72%	70%	+49	62%	42%	72%	31%	61%	50%	59%	59%	56%	49%	

Structural Assessment	Stature	Capacity	Body Length	Front Feet	Back Feet	Leg Angle	Pastern Angle	Muscle	Do-ability	Sheath	Hair Type	Docility	Grade	Scrotal 6/6/22
	25	39	29	22	23	27	22	38	33	4	2	2	5	38

Homozygous poll, Rumbel R45 really catches your eye, he has matured into a very easy doing masculine bull with plenty of softness and an excellent nature.

LOT 15 PURCHASER: _____ NOTES: _____
\$ _____

LOT 16 WEEBOLLABOLLA ROLLESTON R133 (P) (ROAN)

BORN:	20/08/2020	YAMBURGAN ZEUS H140 (P) (P) (RED)	WEEBOLLABOLLA HERCULES H20 (P) (AI) (RED)
COLOUR:	Roan	SIRE: WEEBOLLABOLLA MURTONGA M18 (P) (AI) (RED)	DAM: WEEBOLLABOLLA YONDER N53 (P) (RED)
IDENTITY:	AGFR133	WEEBOLLABOLLA NINDETHANA K200 (P) (RED)	WEEBOLLABOLLA YONDER L1 (P) (RED LITTLE WHITE)

TRAITS OBSERVED: CE,BWT,200WT(X2),600WT(X2),SS,FAT,EMA,IMF

JULY 2022 PERFORMANCE HERDS AUSTRALIA BREEDPLAN

CED	CEM	GL	BW	200	400	600	MCW	MILK	SS	DTC	CWT	EMA	RIB	P8	RBY	IMF	Index
+1.8	+0.6	-0.8	+3.8	+30	+38	+55	+48	+7	+2.4	-1.2	+35	+4.0	+0.5	+0.6	+0.6	+0.6	+\$56
37%	26%	47%	73%	71%	67%	+55	60%	41%	71%	30%	62%	50%	59%	60%	55%	48%	
Structural Assessment		Stature	Capacity	Body Length	Front Feet	Back Feet	Leg Angle	Pastern Angle	Muscle	Do-ability	Sheath	Hair Type	Docility	Grade	Scrotal 6/6/22		
		24	39	27	23	24	26	23	39	33	4	2	1	6	37		

Same sire and commentary as Lot 15 you cannot go wrong with either Murtonga M18 son. M18 has bred consistent progeny inheriting above average numbers and do-ability.

LOT 16 PURCHASER:

NOTES:

\$

LOT 17 WEEBOLLABOLLA RICHMOND R21 (P) (AI) (RED)

HOMOZYGOUS POLL

BORN:	05/07/2020	THE GROVE J0598 (P) (ROAN)	THE GROVE L0247 (P) (RED)
COLOUR:	Red	SIRE: WEEBOLLABOLLA LOMU L8 (P) (AI) (ROAN)	DAM: WEEBOLLABOLLA FANCY P137 (P) (RED)
IDENTITY:	AGFR21	WEEBOLLABOLLA CHATTER BOX J81 (P) (ROAN)	WEEBOLLABOLLA FANCY H238 (P) (ROAN)

TRAITS OBSERVED: CE,BWT,200WT(X2),400WT,600WT(X2),SS,FAT,EMA,IMF

JULY 2022 PERFORMANCE HERDS AUSTRALIA BREEDPLAN

CED	CEM	GL	BW	200	400	600	MCW	MILK	SS	DTC	CWT	EMA	RIB	P8	RBY	IMF	Index
+4.7	+2.2	-3.1	+1.5	+31	+37	+47	+44	+3	+1.7	-1.2	+39	+4.0	-0.1	-0.4	+0.9	+0.7	+\$70
40%	30%	48%	74%	64%	61%	+47	54%	41%	51%	30%	52%	41%	50%	50%	48%	45%	
Structural Assessment		Stature	Capacity	Body Length	Front Feet	Back Feet	Leg Angle	Pastern Angle	Muscle	Do-ability	Sheath	Hair Type	Docility	Grade	Scrotal 6/6/22		
		24	39	28	22	23	27	23	38	33	4	2	2	4	38		

Homozygous poll Richmond R21 was used over a select group of heifers. A heifers first calf himself. We really like how L0247 has bred sale topping sons, improved meat quality whilst maintaining growth, structure and good skins.

LOT 17 PURCHASER:

NOTES:

\$

LOT 18 WEEBOLLABOLLA ROUTE R81 (P) (RED)

HOMOZYGOUS POLL

BORN:	23/07/2020	WEEBOLLABOLLA LOMU L8 (P) (AI) (ROAN)	WEEBOLLABOLLA WESTGATE W185 (P) (RED)
COLOUR:	Red	SIRE: WEEBOLLABOLLA PLATFORM P13 (P) (AI) (RED)	DAM: WEEBOLLABOLLA EAST P40 (DR) (P) (AI) (RED)
IDENTITY:	AGFR81	WEEBOLLABOLLA BAKERY M2 (P) (AI) (RED)	WEEBOLLABOLLA EAST M310 (DR) (P) (RED)

TRAITS OBSERVED: CE,BWT,200WT(X2),400WT,600WT(X2),SS,FAT,EMA,IMF

JULY 2022 PERFORMANCE HERDS AUSTRALIA BREEDPLAN

CED	CEM	GL	BW	200	400	600	MCW	MILK	SS	DTC	CWT	EMA	RIB	P8	RBY	IMF	Index
+5.1		-3.5	+0.3	+28	+31	+40	+44	+7	+1.3	-1.4	+35	+2.9	+1.1	+1.4	-0.6	+1.1	+\$55
33%		42%	73%	69%	67%	+40	58%	35%	70%	27%	57%	45%	55%	55%	51%	43%	
Structural Assessment		Stature	Capacity	Body Length	Front Feet	Back Feet	Leg Angle	Pastern Angle	Muscle	Do-ability	Sheath	Hair Type	Docility	Grade	Scrotal 6/6/22		
		21	38	25	23	24	25	24	39	34	5	2	2	5	37		

Homozygous poll. If you want to drought proof your herd, Route R81 is the way to go. His maternal Grand Sire Westgate W185 was so phenomenal during the 2007 drought he was Artificially Inseminated over select cows to produce R81's dam. A heifers first calf, Platform P13 was selected to increase IMF.

LOT 18 PURCHASER:

NOTES:

\$

LOT 19 WEEBOLLABOLLA RALPH R80 (P) (ROAN)

HOMOZYGOUS POLL *zoetis*

BORN:	22/07/2020	WEEBOLLABOLLA LOMU L8 (P) (AI) (ROAN)	THE GROVE J0993 (P) (RED)
COLOUR:	Roan	SIRE: WEEBOLLABOLLA PEARSALL P41 (P) (AI) (RED)	DAM: WEEBOLLABOLLA VELVET M284 (P) (RED)
IDENTITY:	AGFR80	WEEBOLLABOLLA AGGIE M152 (P) (ROAN)	WEEBOLLABOLLA VELVET H475 (P) (RED)

TRAITS OBSERVED: CE,BWT,200WT,400WT,600WT(X2),SS,FAT,EMA,IMF

JULY 2022 PERFORMANCE HERDS AUSTRALIA BREEDPLAN

CED	CEM	GL	BW	200	400	600	MCW	MILK	SS	DTC	CWT	EMA	RIB	P8	RBY	IMF	Index
-3.8		-0.8	+5.5	+39	+40	+54	+53	+5	+1.5	-0.9	+32	+3.8	+0.6	+0.8	+0.3	+0.5	+\$46
35%		43%	73%	67%	64%	+54	55%	40%	64%	27%	55%	42%	51%	51%	48%	42%	
Structural Assessment		Stature	Capacity	Body Length	Front Feet	Back Feet	Leg Angle	Pastern Angle	Muscle	Do-ability	Sheath	Hair Type	Docility	Grade	Scrotal 6/6/22		
		25	39	29	23	24	27	23	40	32	5	3	2	6	36		

Homozygous poll. Ralph R80 is a neat package with plenty of power. He has sound structure, good growth and excellent fat cover.

LOT 19 PURCHASER:

NOTES:

\$

LOT 20 WEEBOLLABOLLA ROLFE R269 (P) (RED)

HOMOZYGOUS POLL *zoetis*

BORN:	09/09/2020	YAMBURGAN ZEUS H140 (P) (P) (RED)	WEEBOLLABOLLA GORDON G125 (P) (AI) (WHITE)
COLOUR:	Red	SIRE: WEEBOLLABOLLA MURTONGA M18 (P) (AI) (RED)	DAM: WEEBOLLABOLLA FANCY (P) (RED)
IDENTITY:	AGFR269	WEEBOLLABOLLA NINDETHANA K200 (P) (RED)	WEEBOLLABOLLA FANCY G17 (P) (RED)

TRAITS OBSERVED: 200WT(X2),600WT(X2),SS,FAT,EMA,IMF

JULY 2022 PERFORMANCE HERDS AUSTRALIA BREEDPLAN

CED	CEM	GL	BW	200	400	600	MCW	MILK	SS	DTC	CWT	EMA	RIB	P8	RBY	IMF	Index
+2.1		-1.4	+3.3	+33	+39	+51	+45	+9	+1.9		+40	+2.7	+0.0	+0.4	+0.4	+0.6	+\$51
30%		33%	54%	63%	55%	+51	43%	33%	41%		45%	31%	37%	37%	36%	34%	
Structural Assessment		Stature	Capacity	Body Length	Front Feet	Back Feet	Leg Angle	Pastern Angle	Muscle	Do-ability	Sheath	Hair Type	Docility	Grade	Scrotal 6/6/22		
		24	38	29	23	24	25	23	40	33	4	3	1	5	35		

Homozygous poll. Rolfe R269 is another consistent Murtonga M18 son, good milk and fat cover. Built for longevity in females.

LOT 20 PURCHASER:

NOTES:

\$

LOT 21 WEEBOLLABOLLA ROWLAND R254 (H) (ROAN)

BORN:	30/08/2020	YAMBURGAN EMPEROR L63 (P) (AI) (RED)	YAMBURGAN OSSIE G10 (P) (P) (RED)
COLOUR:	Roan	SIRE: WEEBOLLABOLLA PLAYER P136 (P) (ROAN)	DAM: WEEBOLLABOLLA ARDULLIE M283 (P) (RED)
IDENTITY:	AGFR254	WEEBOLLABOLLA FANCY L147 (P) (ROAN)	WEEBOLLABOLLA ARDULLIE H378 (H) (RED)

TRAITS OBSERVED: CE,200WT(X2),400WT,600WT(X2),SS,FAT,EMA,IMF

JULY 2022 PERFORMANCE HERDS AUSTRALIA BREEDPLAN

CED	CEM	GL	BW	200	400	600	MCW	MILK	SS	DTC	CWT	EMA	RIB	P8	RBY	IMF	Index
+0.8		-1.3	+4.1	+32	+55	+75	+95	+6	+3.0	-1.9	+52	+4.1	-0.6	-0.6	+0.9	+0.7	+\$67
31%		35%	63%	68%	67%	+75	57%	36%	69%	27%	58%	45%	56%	56%	52%	44%	
Structural Assessment		Stature	Capacity	Body Length	Front Feet	Back Feet	Leg Angle	Pastern Angle	Muscle	Do-ability	Sheath	Hair Type	Docility	Grade	Scrotal 6/6/22		
		26	38	30	22	23	26	23	38	33	3	2	2	5	38		

A lovely deep bull, Rowland R254 offers numerous strengths across fertility, performance and structure.

LOT 21 PURCHASER:

NOTES:

\$

LOT 22 WEEBOLLABOLLA ROBO R57 (P) (RED)

BORN:	18/07/2020	WEEBOLLABOLLA LOMU L8 (P) (AI) (ROAN)	WEEBOLLABOLLA GOODWIN G576 (P) (RED)
COLOUR:	Red	SIRE: WEEBOLLABOLLA PISTON P24 (P) (AI) (RLW)	DAM: WEEBOLLABOLLA CIRROCUMULUS K313 (P) (RED)
IDENTITY:	AGFR57	WEEBOLLABOLLA ALLPASS M326 (P) (RED)	WEEBOLLABOLLA CIRROCUMULUS E30 (P) (RED)

TRAITS OBSERVED: BWT,200WT(X2),400WT,600WT(X2),SS,FAT,EMA,IMF **JULY 2022 PERFORMANCE HERDS AUSTRALIA BREEDPLAN**

CED	CEM	GL	BW	200	400	600	MCW	MILK	SS	DTC	CWT	EMA	RIB	P8	RBY	IMF	Index
+6.0		-3.4	-0.1	+20	+33	+40	+41	+4	+1.7	-0.3	+38	+4.1	-1.4	-0.6	+1.8	+0.3	+\$60
34%		44%	73%	70%	68%	+40	59%	41%	71%	31%	59%	47%	56%	56%	53%	45%	
Structural Assessment		Stature	Capacity	Body Length	Front Feet	Back Feet	Leg Angle	Pastern Angle	Muscle	Do-ability	Sheath	Hair Type	Docility	Grade	Scrotal 6/6/22		
		28	37	32	23	24	26	23	36	30	3	2	1	4	38		

Excellent skin type for Redman R52 - impressive fertility traits.

LOT 22 PURCHASER: _____ NOTES: _____
\$ _____

LOT 23 WEEBOLLABOLLA ROMEO R145 (P) (RED) HOMOZYGOUS POLL *zoetis*

BORN:	27/08/2020	WEEBOLLABOLLA GOODAR G105 (P) (AI) (R&W)	YAMBURGAN OSSIE G10 (P) (P) (RED)
COLOUR:	Red	SIRE: ROYALLA ROMEO K267 (P) (AI) (RED LITTLE WHITE)	DAM: WEEBOLLABOLLA BOOLA L236 (P) (RED)
IDENTITY:	AGFR145	ROYALLA SUSAN 9200M (P)	WEEBOLLABOLLA BOOLA H355 (P) (AI) (RED)

TRAITS OBSERVED: 200WT(X2),600WT(X2),SS,FAT,EMA,IMF **JULY 2022 PERFORMANCE HERDS AUSTRALIA BREEDPLAN**

CED	CEM	GL	BW	200	400	600	MCW	MILK	SS	DTC	CWT	EMA	RIB	P8	RBY	IMF	Index
+3.0		-2.0	+3.7	+39	+54	+66	+62	+4	+1.1	-0.4	+53	+3.4	+0.2	+0.8	+0.5	+0.7	+\$72
25%		28%	52%	62%	56%	+66	51%	34%	66%	27%	50%	41%	49%	49%	45%	37%	
Structural Assessment		Stature	Capacity	Body Length	Front Feet	Back Feet	Leg Angle	Pastern Angle	Muscle	Do-ability	Sheath	Hair Type	Docility	Grade	Scrotal 6/6/22		
		27	38	31	24	25	26	24	38	32	5	3	2	5	38		

Homozygous poll. Great fat cover, Romeo R145 has a lovely disposition and numbers to match.

LOT 23 PURCHASER: _____ NOTES: _____
\$ _____

LOT 24 WEEBOLLABOLLA REDMILL R53 (P) (AI) (RED) HOMOZYGOUS POLL *zoetis*

BORN:	15/07/2020	WEEBOLLABOLLA LOMU L8 (P) (AI) (ROAN)	YAMBURGAN OSSIE E93 (P) (ROAN)
COLOUR:	Red	SIRE: WEEBOLLABOLLA PHILLIP P30 (P) (AI) (ROAN)	DAM: WEEBOLLABOLLA WILMA H217 (P) (RED)
IDENTITY:	AGFR53	WEEBOLLABOLLA ADELAIDE M4 (P) (AI) (RED)	WEEBOLLABOLLA WILMA E4 (P) (AI) (ET) (ROAN)

TRAITS OBSERVED: CE,BWT,200WT(X2),400WT,600WT(X2),SS,FAT,EMA,IMF **JULY 2022 PERFORMANCE HERDS AUSTRALIA BREEDPLAN**

CED	CEM	GL	BW	200	400	600	MCW	MILK	SS	DTC	CWT	EMA	RIB	P8	RBY	IMF	Index
-1.8	-0.4	-1.6	+3.8	+31	+39	+51	+58	+5	+2.8	-1.1	+37	+4.4	-1.5	-2.2	+2.1	-0.1	+\$50
40%	29%	48%	75%	72%	70%	+51	61%	44%	72%	34%	61%	49%	58%	58%	55%	48%	
Structural Assessment		Stature	Capacity	Body Length	Front Feet	Back Feet	Leg Angle	Pastern Angle	Muscle	Do-ability	Sheath	Hair Type	Docility	Grade	Scrotal 6/6/22		
		24	39	27	23	24	25	24	39	30	4	2	2	5	41		

Homozygous poll. Redmill R53 is Wilma H217's fourth son to appear in our bull sales - she always produces sons with big scrotals and EMAs.

LOT 24 PURCHASER: _____ NOTES: _____
\$ _____

LOT 25 WEEBOLLABOLLA ROCKHAMPTON R55 (P) (RED)

HOMOZYGOUS POLL *zoetis*

BORN:	16/07/2020	YAMBURGAN ZEUS H140 (P) (P) (RED)	WEEBOLLABOLLA EXCEPTIONAL E110 (P) (ROAN)
COLOUR:	Red	SIRE: WEEBOLLABOLLA MURTONGA M18 (P) (AI) (RED)	DAM: WEEBOLLABOLLA YONDER J316 (P) (RED)
IDENTITY:	AGFR55	WEEBOLLABOLLA NINDETHANA K200 (P) (RED)	WEEBOLLABOLLA YONDER F390 (P) (RED)

TRAITS OBSERVED: CE,BWT,200WT(X2),600WT(X2),SS,FAT,EMA,IMF

JULY 2022 PERFORMANCE HERDS AUSTRALIA BREEDPLAN

CED	CEM	GL	BW	200	400	600	MCW	MILK	SS	DTC	CWT	EMA	RIB	P8	RBY	IMF	Index
+4.2	+1.4	-3.0	+2.3	+34	+48	+65	+67	+7	+1.4	+0.0	+52	+4.8	-0.9	-1.3	+1.5	+0.5	+\$71
40%	28%	49%	76%	73%	69%	+65	63%	47%	72%	33%	61%	49%	58%	58%	55%	48%	

Structural Assessment	Stature	Capacity	Body Length	Front Feet	Back Feet	Leg Angle	Pastern Angle	Muscle	Do-ability	Sheath	Hair Type	Docility	Grade	Scrotal 6/6/22
	29	38	34	23	24	26	23	38	31	5	2	1	5	37

Homozygous poll. Consistency is a key word that follows Murtonga M18 sons - Rockhampton R55 is another rich red son with a beautiful temperament.

LOT 25 PURCHASER: _____ NOTES: _____
\$ _____

LOT 26 WEEBOLLABOLLA REDMAN R52 (P) (AI) (RED)

BORN:	15/07/2020	WEEBOLLABOLLA LOMU L8 (P) (AI) (ROAN)	WEEBOLLABOLLA JEFFREYS J226 (P) (RED)
COLOUR:	Red	SIRE: WEEBOLLABOLLA PLATFORM P13 (P) (AI) (RED)	DAM: WEEBOLLABOLLA XPERIMENT M110 (P) (AI) (RLW)
IDENTITY:	AGFR52	WEEBOLLABOLLA BAKERY M2 (P) (AI) (RED)	WEEBOLLABOLLA XPERIMENT G95 (P) (RED)

TRAITS OBSERVED: CE,BWT,200WT(X2),400WT,600WT(X2),SS,FAT,EMA,IMF

JULY 2022 PERFORMANCE HERDS AUSTRALIA BREEDPLAN

CED	CEM	GL	BW	200	400	600	MCW	MILK	SS	DTC	CWT	EMA	RIB	P8	RBY	IMF	Index
+0.8	+0.9	-2.8	+3.5	+41	+44	+56	+56	+6	+1.5	-1.7	+42	+3.2	-0.1	-0.1	+0.3	+0.7	+\$62
37%	25%	45%	74%	70%	68%	+56	59%	40%	71%	29%	59%	47%	57%	56%	53%	45%	

Structural Assessment	Stature	Capacity	Body Length	Front Feet	Back Feet	Leg Angle	Pastern Angle	Muscle	Do-ability	Sheath	Hair Type	Docility	Grade	Scrotal 6/6/22
	28	37	32	23	24	25	24	37	31	4	2	1	5	35

Remand R52 is another excellent Platform P13 son. Hard to fault.

LOT 26 PURCHASER: _____ NOTES: _____
\$ _____

LOT 27 WEEBOLLABOLLA REDFERN R61 (H) (ROAN)

BORN:	18/07/2020	WEEBOLLABOLLA LOMU L8 (P) (AI) (ROAN)	WEEBOLLABOLLA HERCULES H20 (P) (AI) (RED)
COLOUR:	Roan	SIRE: WEEBOLLABOLLA PROVERB P35 (P) (AI) (ROAN)	DAM: WEEBOLLABOLLA AUBURN N58 (P) (RED)
IDENTITY:	AGFR61	WEEBOLLABOLLA KYLIE M196 (H) (RED)	WEEBOLLABOLLA AUBURN L168 (P) (ROAN)

TRAITS OBSERVED: CE,BWT,200WT(X2),400WT,600WT,SS,FAT,EMA,IMF

JULY 2022 PERFORMANCE HERDS AUSTRALIA BREEDPLAN

CED	CEM	GL	BW	200	400	600	MCW	MILK	SS	DTC	CWT	EMA	RIB	P8	RBY	IMF	Index
-0.5	-0.1	-1.1	+4.6	+38	+49	+62	+52	+5	+2.0	-0.7	+43	+3.9	-0.6	-1.0	+1.3	+0.5	+\$65
37%	25%	45%	73%	69%	68%	+62	54%	40%	44%	26%	55%	36%	46%	45%	43%	40%	

Structural Assessment	Stature	Capacity	Body Length	Front Feet	Back Feet	Leg Angle	Pastern Angle	Muscle	Do-ability	Sheath	Hair Type	Docility	Grade	Scrotal 6/6/22
	25	40	29	22	23	26	23	40	32	4	3	2	5	39

Redfern R61 will add longevity, good growth and structure.

LOT 27 PURCHASER: _____ NOTES: _____
\$ _____

LOT 28 WEEBOLLABOLLA ROBERTSON R140 (P) (RED) HOMOZYGOUS POLL *zoetis*

BORN:	26/08/2020	WEEBOLLABOLLA LOMU L8 (P) (AI) (ROAN)	THE GROVE L0140 (P) (AI) (RED)
COLOUR:	Red	SIRE: WEEBOLLABOLLA PEARSALL P41 (P) (AI) (RED)	DAM: WEEBOLLABOLLA VIYELLA N81 (P) (RED)
IDENTITY:	AGFR140	WEEBOLLABOLLA AGGIE M152 (P) (ROAN)	WEEBOLLABOLLA VIYELLA L287 (P) (RED)

TRAITS OBSERVED: CE,400WT,600WT,SS,FAT,EMA,IMF

JULY 2022 PERFORMANCE HERDS AUSTRALIA BREEDPLAN

CED	CEM	GL	BW	200	400	600	MCW	MILK	SS	DTC	CWT	EMA	RIB	P8	RBY	IMF	Index
+0.0		-2.1	+3.7	+37	+46	+59	+64	+7	+1.9		+42	+3.4	+0.1	-0.1	+0.7	+0.8	+\$68
34%		38%	57%	54%	52%	+59	46%	36%	47%		46%	36%	45%	45%	42%	38%	

Structural Assessment	Stature	Capacity	Body Length	Front Feet	Back Feet	Leg Angle	Pastern Angle	Muscle	Do-ability	Sheath	Hair Type	Docility	Grade	Scrotal 6/6/22
		24	38	28	23	24	26	23	38	30	4	1	2	5

Homozygous poll, a bull with plenty of volume and sound structure - he was a standout as a yearling. Robertson R140 has a beautiful skin type.

LOT 28 PURCHASER: _____ NOTES: _____
\$ _____

LOT 29 WEEBOLLABOLLA REDBANK R11 (P) (AI) (RED LITTLE WHITE)

BORN:	03/07/2020	WEEBOLLABOLLA LOMU L8 (P) (AI) (ROAN)	BUNDALEER UNITED CHIEF U21 (P) (RED LITTLE WHITE)
COLOUR:	Red Little White	SIRE: WEEBOLLABOLLA PROVERB P35 (P) (AI) (ROAN)	DAM: WEEBOLLABOLLA ALEXIA L216 (P) (AI) (TW) (R & W)
IDENTITY:	AGFR11	WEEBOLLABOLLA KYLIE M196 (H) (RED)	WEEBOLLABOLLA ALEXIA J314 (P) (RED)

TRAITS OBSERVED: CE,BWT,200WT(X2),600WT,SS,FAT,EMA,IMF

JULY 2022 PERFORMANCE HERDS AUSTRALIA BREEDPLAN

CED	CEM	GL	BW	200	400	600	MCW	MILK	SS	DTC	CWT	EMA	RIB	P8	RBY	IMF	Index
+2.0	+2.1	-2.5	+2.7	+39	+49	+62	+53	+9	+1.9	-1.9	+47	+4.3	-1.1	-1.8	+2.0	+0.1	+\$71
39%	28%	46%	73%	69%	63%	+62	53%	43%	44%	28%	52%	36%	46%	45%	43%	41%	

Structural Assessment	Stature	Capacity	Body Length	Front Feet	Back Feet	Leg Angle	Pastern Angle	Muscle	Do-ability	Sheath	Hair Type	Docility	Grade	Scrotal 6/6/22
		28	38	34	23	24	25	24	30	30	4	1	2	7

Another extremely appealing Proverb P35. Redbank R11 is a potential stud sire. The head carriage, length and meat right down through this Bull's hindquarter is exceptional. DW thought so too as he was graded a 7.

LOT 29 PURCHASER: _____ NOTES: _____
\$ _____

LOT 30 WEEBOLLABOLLA ROGER RAMJET R34 (P) (AI) (RED LITTLE WHITE)

BORN:	09/07/2020	WEEBOLLABOLLA LOMU L8 (P) (AI) (ROAN)	WOOLCOTT H287 (P) (RED)
COLOUR:	Red Little White	SIRE: WEEBOLLABOLLA PACKER P9 (S) (AI) (ROAN)	DAM: WEEBOLLABOLLA DARWIN L248 (P) (RED)
IDENTITY:	AGFR34	WEEBOLLABOLLA BLIZZARD M22 (P) (AI) (RED)	WEEBOLLABOLLA DARWIN D136 (P) (ROAN)

TRAITS OBSERVED: CE,BWT,200WT(X2),400WT,600WT(X2),SS,FAT,EMA,IMF

JULY 2022 PERFORMANCE HERDS AUSTRALIA BREEDPLAN

CED	CEM	GL	BW	200	400	600	MCW	MILK	SS	DTC	CWT	EMA	RIB	P8	RBY	IMF	Index
+0.2		-2.7	+5.3	+48	+55	+69	+56	+6	+1.8	-1.1	+45	+2.8	-0.8	-1.2	+1.2	+0.2	+\$63
37%		44%	74%	70%	69%	+69	58%	42%	66%	29%	59%	44%	54%	54%	51%	44%	

Structural Assessment	Stature	Capacity	Body Length	Front Feet	Back Feet	Leg Angle	Pastern Angle	Muscle	Do-ability	Sheath	Hair Type	Docility	Grade	Scrotal 6/6/22
		30	39	34	24	24	26	23	38	29	5	2	2	5

Very sound and attractive Packer P9 son. Roger Ramjet R34 has loads of performance - another standout from the start.

LOT 30 PURCHASER: _____ NOTES: _____
\$ _____

LOT 31 WEEBOLLABOLLA ROWDY R27 (P) (AI) (RED)

BORN:	07/07/2020	THE GROVE GIGABYTES J0837 (P) (ET) (RED)	BUNDALEER UNITED CHIEF U21 (P) (RED LITTLE WHITE)
COLOUR:	Red	SIRE: THE GROVE TERABYTES M0661 (P) (AI) (RED)	DAM: WEEBOLLABOLLA WHISPER L209 (P) (AI) (RED)
IDENTITY:	AGFR27	THE GROVE LILY G0810 (P) (ROAN)	WEEBOLLABOLLA WHISPER J108 (P) (ROAN)

TRAITS OBSERVED: CE,BWT,200WT,400WT,600WT(X2),SS,FAT,EMA,IMF

JULY 2022 PERFORMANCE HERDS AUSTRALIA BREEDPLAN

CED	CEM	GL	BW	200	400	600	MCW	MILK	SS	DTC	CWT	EMA	RIB	P8	RBY	IMF	Index
+0.0	+2.2	-1.0	+4.1	+38	+52	+71	+76	+13	+1.6	-2.5	+53	+4.7	+0.6	+0.7	+0.4	+1.3	+\$76
40%	31%	52%	74%	70%	66%	+71	59%	45%	65%	32%	57%	46%	54%	54%	52%	46%	

Structural Assessment	Stature	Capacity	Body Length	Front Feet	Back Feet	Leg Angle	Pastern Angle	Muscle	Do-ability	Sheath	Hair Type	Docility	Grade	Scrotal 6/6/22
	25	38	28	22	23	26	23	38	31	3	2	1	4	38

We have been trying hard to bring more IMF to the program. Excitingly Rowdy R27 brings excellent growth, loads of carcass appeal, calving ease and is very quiet.

LOT 31 PURCHASER: _____ NOTES: _____
\$ _____

LOT 32 WEEBOLLABOLLA RODEO R146 (P) (RED)

BORN:	27/08/2020	WEEBOLLABOLLA LOMU L8 (P) (AI) (ROAN)	WEEBOLLABOLLA KNEIPP K9 (P) (A) (RED)
COLOUR:	Red	SIRE: WEEBOLLABOLLA PHILLIP P30 (P) (AI) (ROAN)	DAM: WEEBOLLABOLLA AGGIE M152 (P) (ROAN)
IDENTITY:	AGFR146	WEEBOLLABOLLA ADELAIDE M4 (P) (AI) (RED)	WEEBOLLABOLLA AGGIE K330 (P) (ROAN)

TRAITS OBSERVED: CE,200WT(X2),400WT,600WT(X2),SS,FAT,EMA,IMF

JULY 2022 PERFORMANCE HERDS AUSTRALIA BREEDPLAN

CED	CEM	GL	BW	200	400	600	MCW	MILK	SS	DTC	CWT	EMA	RIB	P8	RBY	IMF	Index
+4.3		-2.6	+2.6	+35	+38	+48	+44	+9	+1.5	-2.6	+37	+3.2	+1.5	2	-0.3	+1.0	+\$63
36%		39%	64%	69%	68%	+48	59%	39%	70%	28%	59%	47%	56%	56%	53%	45%	

Structural Assessment	Stature	Capacity	Body Length	Front Feet	Back Feet	Leg Angle	Pastern Angle	Muscle	Do-ability	Sheath	Hair Type	Docility	Grade	Scrotal 6/6/22
	21	39	27	22	23	26	22	39	33	5	2	1	5	37

Rodeo R146 is a moderate red, who will add good calving ease, milk, fat and IMF to your herd.

LOT 32 PURCHASER: _____ NOTES: _____
\$ _____

LOT 33 WEEBOLLABOLLA REBEL R149 (P) (RED)

HOMOZYGOUS POLL 

BORN:	29/08/2020	WEEBOLLABOLLA LOMU L8 (P) (AI) (ROAN)	YAMBURGAN OSSIE E93 (P) (ROAN)
COLOUR:	Red	SIRE: WEEBOLLABOLLA PISTON P24 (P) (AI) (RLW)	DAM: WEEBOLLABOLLA BODACIOUS K174 (P) (ROAN)
IDENTITY:	AGFR149	WEEBOLLABOLLA ALLPASS M326 (P) (RED)	WEEBOLLABOLLA BODACIOUS B112 (P) (RED)

TRAITS OBSERVED: CE,200WT(X2),600WT(X2),SS,FAT,EMA,IMF

JULY 2022 PERFORMANCE HERDS AUSTRALIA BREEDPLAN

CED	CEM	GL	BW	200	400	600	MCW	MILK	SS	DTC	CWT	EMA	RIB	P8	RBY	IMF	Index
+2.7	+2.5	-2.4	+0.9	+16	+25	+37	+50	+2	+2.3	-4.6	+31	+3.7	-0.1	+0.1	+0.9	+0.6	+\$66
37%	27%	40%	64%	69%	65%	+37	60%	44%	70%	33%	59%	48%	57%	57%	53%	46%	

Structural Assessment	Stature	Capacity	Body Length	Front Feet	Back Feet	Leg Angle	Pastern Angle	Muscle	Do-ability	Sheath	Hair Type	Docility	Grade	Scrotal 6/6/22
	23	38	27	23	24	26	23	38	32	3	3	1	4	37

Homozygous poll. Is another Lomu L8 son. Rebel R149 is a moderate bull that will add easy calving, fertile daughters with plenty of cover to handle droughts. Top 1% for Days to Calving.

LOT 33 PURCHASER: _____ NOTES: _____
\$ _____

LOT 34 WEEBOLLABOLLA RANGE R134 (P) (RED)

HOMOZYGOUS POLL *zoetis*

BORN:	21/08/2020	WEEBOLLABOLLA LOMU L8 (P) (AI) (ROAN)	WEEBOLLABOLLA LIGNUM L14 (P) (AI) (ROAN)
COLOUR:	Red	SIRE: WEEBOLLABOLLA PLATFORM P13 (P) (AI) (RED)	DAM: WEEBOLLABOLLA COMMITTEE P32 (P) (AI) (RED)
IDENTITY:	AGFR134	WEEBOLLABOLLA BAKERY M2 (P) (AI) (RED)	WEEBOLLABOLLA COMMITTEE M30 (P) (AI) (RED)

TRAITS OBSERVED: CE,200WT(X2),400WT,600WT(X2),SS,FAT,EMA,IMF

JULY 2022 PERFORMANCE HERDS AUSTRALIA BREEDPLAN

CED	CEM	GL	BW	200	400	600	MCW	MILK	SS	DTC	CWT	EMA	RIB	P8	RBY	IMF	Index
+6.1		-3.5	+0.4	+29	+31	+39	+36	+8	+0.7	-2.7	+36	+2.9	+2.0	+2.6	-0.9	+1.3	+\$62
34%		39%	57%	55%	54%	+39	47%	33%	47%	25%	47%	37%	47%	47%	44%	40%	
Structural Assessment		Stature	Capacity	Body Length	Front Feet	Back Feet	Leg Angle	Pastern Angle	Muscle	Do-ability	Sheath	Hair Type	Docility	Grade	Scrotal 6/6/22		
		21	38	25	23	24	26	23	39	33	5	3	1	4	36		

Homozygous poll. Range R134 is the most moderate framed bull and as a result maintains the highest fat in the draft with decent IMF.

LOT 34 PURCHASER:

NOTES:

\$

LOT 35 WEEBOLLABOLLA RBA R144 (P) (ROAN)

BORN:	27/08/2020	WEEBOLLABOLLA LOMU L8 (P) (AI) (ROAN)	YAMBURGAN OSSIE G10 (P) (P) (RED)
COLOUR:	Roan	SIRE: WEEBOLLABOLLA PACKER P9 (S) (AI) (ROAN)	DAM: WEEBOLLABOLLA ALEXIA M273 (P) (RED)
IDENTITY:	AGFR144	WEEBOLLABOLLA BLIZZARD M22 (P) (AI) (RED)	WEEBOLLABOLLA ALEXIA F124 (H) (ROAN)

TRAITS OBSERVED: CE,200WT(X2),400WT,600WT(X2),SS,FAT,EMA,IMF

JULY 2022 PERFORMANCE HERDS AUSTRALIA BREEDPLAN

CED	CEM	GL	BW	200	400	600	MCW	MILK	SS	DTC	CWT	EMA	RIB	P8	RBY	IMF	Index
+4.4	-0.3	-3.9	+3.0	+38	+46	+61	+64	+6	+1.1	-1.9	+46	+4.0	-1.0	-1.3	+1.7	+0.1	+\$72
36%	26%	39%	64%	69%	68%	+61	59%	40%	70%	31%	60%	48%	57%	57%	54%	48%	
Structural Assessment		Stature	Capacity	Body Length	Front Feet	Back Feet	Leg Angle	Pastern Angle	Muscle	Do-ability	Sheath	Hair Type	Docility	Grade	Scrotal 6/6/22		
		23	40	27	23	24	27	22	40	32	5	2	1	6	36		

A typical roan Packer P9 son, excellent structure, plenty of calving ease traits combined with growth scores him a higher index. A deserving overall grade 6 from DW for RBA R144.

LOT 35 PURCHASER:

NOTES:

\$

LOT 36 WEEBOLLABOLLA RONAN R130 (P) (RED & WHITE)

BORN:	18/08/2020	WEEBOLLABOLLA LOMU L8 (P) (AI) (ROAN)	WEEBOLLABOLLA KNEIPP K9 (P) (AI)
COLOUR:	Red & White	SIRE: WEEBOLLABOLLA PISTON P24 (P) (AI) (RLW)	DAM: WEEBOLLABOLLA CONFETTY M68 (P) (ROAN)
IDENTITY:	AGFR130	WEEBOLLABOLLA ALLPASS M326 (P) (RED)	WEEBOLLABOLLA CONFETTY K92 (S) (AI) (ROAN)

TRAITS OBSERVED: CE,BWT,400WT,600WT(X2),SS,FAT,EMA,IMF

JULY 2022 PERFORMANCE HERDS AUSTRALIA BREEDPLAN

CED	CEM	GL	BW	200	400	600	MCW	MILK	SS	DTC	CWT	EMA	RIB	P8	RBY	IMF	Index
+4.1		-2.5	+2.0	+28	+34	+49	+52	+5	+1.3	-0.8	+37	+3.9	-0.4	-0.5	+1.2	+0.4	+\$60
33%		42%	71%	61%	58%	+49	49%	37%	46%	26%	47%	35%	45%	45%	43%	39%	
Structural Assessment		Stature	Capacity	Body Length	Front Feet	Back Feet	Leg Angle	Pastern Angle	Muscle	Do-ability	Sheath	Hair Type	Docility	Grade	Scrotal 6/6/22		
		25	38	28	23	24	26	24	38	32	5	3	1	5	37		

Ronan R130 has a lovely temperament and is a good all round bull without any extremes.

LOT 36 PURCHASER:

NOTES:

\$

EBV QUICK REFERENCE*

LOT	IDENT	SIRE	ESTIMATED BREEDING VALUES																	DICK WHALE STRUCTURAL ASSESSMENT													
			CED	CEM	GL	BWT	200D	400D	600D	MCW	MILK	SS	DTC	CWT	EMA	RIB	RUMP	RBV%	IMF%	INDEX	Stat.	Cap.	Body L.	Fl. Ft.	Bk. Ft.	Leg Ang.	Past. Ang.	Muscle	Do Ability	Sheath	Hair Type	Dockity	Grade
1	R23	J87	-5.7	-0.1	-0.8	4.8	33	50	66	73	4	2.6	0.4	44	4.1	-1.1	-1.7	2	0.3	\$51	28	38	32	23	24	25	24	38	32	4	3	1	5
2	R16	P9	5.1	1.4	-4.9	2.7	44	60	85	99	5	2.3	-1.4	61	3.5	-1.9	-2.6	2	0.3	\$87	29	38	34	23	24	27	23	38	31	4	1	2	6
3	R78	P9	4.4	2.9	-4	2.7	44	55	68	54	12	1.3	-1.3	52	3.8	0	0	0.7	\$71	23	39	27	23	24	26	23	42	32	4	1	1	6	
4	R24	P35	-0.5		-2	3.8	39	51	70	70	7	2.3	-1.7	53	4.4	-1.5	-2	2.4	0	\$70	28	38	32	23	24	26	23	38	32	4	2	2	6
5	R87	P35	-2.2		-1.7	5.9	43	62	83	84	2	2.8	-1.6	52	4	-0.6	-1.1	1.3	0.5	\$72	23	38	27	23	24	26	23	39	33	5	2	2	6
6	R20	P35	-2.1	-4.4	-3.2	4.3	47	60	76	85	7	2.4		53	3.6	0.5	0.6	0	0.8	\$67	27	40	32	23	24	27	23	40	32	5	2	1	7
7	R266	P30	5.8	4.4	-3.1	0.2	27	34	35	27	7	1.3	-3.4	38	3	-0.5	-0.7	1	0.4	\$65	25	38	28	23	24	26	23	38	31	5	2	2	6
8	R19	P35	-5	-3.1	-1.9	5.5	44	56	75	83	7	2.6	-3	50	4.3	-0.6	-0.8	1.4	0.2	\$59	28	38	32	23	24	25	24	38	30	3	2	2	5
9	R66	AGFP9	0.1		-3.2	4.7	46	56	78	76	8	1.8	-0.5	54	3.7	-1.4	-1.9	2	0	\$68	28	38	32	23	24	25	24	38	31	4	2	2	6
10	R98	AGFP9	0.2	-4.8	-1.8	5.1	43	54	69	53	6	2.4	-1.5	49	3.8	-1.5	-2.1	2	0	\$65	25	38	29	23	24	26	23	38	33	4	2	2	6
11	R44	P013	-16.5	-2.6	-2	7.4	52	72	95	111	6	1.9	-1.4	62	5.2	-0.6	-1	1.7	0.7	\$51	29	38	33	23	24	25	24	38	28	5	2	2	5
12	R120	P13	6.7	4.2	-4.4	-0.3	28	38	51	50	8	1.4	-0.8	47	4.2	-0.9	-1.4	1.6	0.4	\$66	29	38	32	23	24	26	23	38	32	4	2	2	6
13	R39	P9	-2.5	-3.2	-2	4.6	36	47	64	69	1	1.7	-1.7	47	4.1	-0.3	-0.4	1.3	0.6	\$68	28	38	31	23	24	26	23	38	32	4	2	2	5
14	R114	M18	2.8	-0.1	-3.1	2.7	33	42	56	64	9	2.1	-2.9	43	4	0.2	0.4	0.6	0.5	\$62	25	38	30	23	24	26	24	39	32	5	3	2	6
15	R45	M18	2.1	2.3	-1.8	2.4	27	36	49	67	8	1.9	-1.4	40	4.3	0.5	0.8	0.8	0.6	\$58	25	39	29	22	23	27	22	38	33	4	2	2	5
16	R133	M18	1.8	0.6	-0.8	3.8	30	38	55	48	7	2.4	-1.2	35	4	0.5	0.6	0.6	0.6	\$56	24	39	27	23	24	26	23	39	33	4	2	1	6
17	R21	L8	4.7	2.2	-3.1	1.5	31	37	47	44	3	1.7	-1.2	39	4	-0.1	-0.4	0.9	0.7	\$70	24	39	28	22	23	27	23	38	33	4	2	2	4
18	R81	P13	5.1		-3.5	0.3	28	31	40	44	7	1.3	-1.4	35	2.9	1.1	1.4	-0.6	1.1	\$55	21	38	25	23	24	25	24	39	34	5	2	2	5
19	R80	P41	-3.8		-0.8	5.5	39	40	54	53	5	1.5	-0.9	32	3.8	0.6	0.8	0.3	0.5	\$46	25	39	29	23	24	27	23	40	32	5	3	2	6
20	R269	M18	2.1		-1.4	3.3	33	39	51	45	9	1.9		40	2.7	0	0.4	0.4	0.6	\$51	24	38	29	23	24	25	23	40	33	4	3	1	5
21	R254	P136	0.8		-1.3	4.1	32	55	75	95	6	3	-1.9	52	4.1	-0.6	-0.6	0.9	0.7	\$67	26	38	30	22	23	26	23	38	33	3	2	2	5
22	R57	P24	6		-3.4	-0.1	20	33	40	41	4	1.7	-0.3	38	4.1	-1.4	-1.9	1.8	0.3	\$60	28	37	32	23	24	26	23	36	30	3	2	1	4
23	R145	K267	3		-2	3.7	39	54	66	62	4	1.1	-0.4	53	3.4	0.2	0.8	0.5	0.7	\$72	27	38	31	24	25	26	24	38	32	5	3	2	5
24	R53	P30	-1.8	-0.4	-1.6	3.8	31	39	51	58	5	2.8	-1.1	37	4.4	-1.5	-2.2	2.1	-0.1	\$50	24	39	27	23	24	25	24	39	30	4	2	2	5
25	R55	M18	4.2	1.4	-3	2.3	34	48	65	67	7	1.4	0	52	4.8	-0.9	-1.3	1.5	0.5	\$71	29	38	34	23	24	26	23	38	31	5	2	1	5

ESTIMATED BREEDING VALUES															DICK WHALE STRUCTURAL ASSESSMENT																		
LOT	IDENT	SIRE	CED	CEM	GL	BWT	200D	400D	600D	MCW	MILK	SS	DTC	CWT	EMA	RIB	RUMP	RBV%	IMF%	INDEX	Stat.	Cap.	Body L.	Ft. L.	Bk. Ft.	Leg Ang.	Past. Ang.	Muscle	Do Ability	Sheath	Hair Type	Docility	Grade
26	R52	P13	0.8	0.9	-2.8	3.5	41	44	56	56	6	1.5	-1.7	42	3.2	-0.1	-0.1	0.3	0.7	\$62	28	37	32	23	24	25	24	37	31	4	2	1	5
27	R61	P35	-0.5	-0.1	-1.1	4.6	38	49	62	52	5	2	-0.7	43	3.9	-0.6	-1	1.3	0.5	\$65	25	40	29	22	23	26	23	40	32	4	3	2	5
28	R140	P41	0		-2.1	3.7	37	46	59	64	7	1.9		42	3.4	0.1	-0.1	0.7	0.8	\$68	24	38	28	23	24	26	23	38	30	4	1	2	5
29	R11	P35	2	2.1	-2.5	2.7	39	49	62	53	9	1.9	-1.9	47	4.3	-1.1	-1.8	2	0.1	\$71	28	38	34	23	24	25	24	30	30	4	1	2	7
30	R34	P9	0.2		-2.7	5.3	48	55	69	56	6	1.8	-1.1	45	2.8	-0.8	-1.2	1.2	0.2	\$63	30	39	34	24	24	26	23	38	29	5	2	2	5
31	R27	M0661	0	2.2	-1	4.1	38	52	71	76	13	1.6	-2.5	53	4.7	0.6	0.7	0.4	1.3	\$76	25	38	28	22	23	26	23	38	31	3	2	1	4
32	R146	P30	4.3		-2.6	2.6	35	38	48	44	9	1.5	-2.6	37	3.2	1.5	2	-0.3	1	\$63	21	39	27	22	23	26	22	39	33	5	2	1	5
33	R149	P24	2.7	2.5	-2.4	0.9	16	25	37	50	2	2.3	-4.6	31	3.7	-0.1	0.1	0.9	0.6	\$66	23	38	27	23	24	26	23	38	32	3	3	1	4
34	R134	P13	6.1		-3.5	0.4	29	31	39	36	8	0.7	-2.7	36	2.9	2	2.6	-0.9	1.3	\$62	21	38	25	23	24	26	23	39	33	5	3	1	4
35	R75	P41	4.4	-0.3	-3.9	3	38	46	61	64	6	1.1	-1.9	46	4	-1	-1.3	1.7	0.1	\$72	23	40	27	23	24	27	22	40	32	5	2	1	6
36	R144	P9	4.1		-2.5	2	28	34	49	52	5	1.3	-0.8	37	3.9	-0.4	-0.5	1.2	0.4	\$60	25	38	28	23	24	26	24	38	32	5	3	1	5
37	R130	P24	2.1		-1.2	2	19	32	41	49	-1	2.1		33	3	-0.5	-0.5	0.8	0.6	\$55	24	37	27	23	24	25	24	37	31	4	2	1	4
38	R76	P24	-4.8	-4.1	-1.5	6.8	51	68	82	80	10	1.9	-3.3	52	3.1	0.5	0.7	-0.1	0.7	\$59	21	40	25	22	23	26	24	40	32	5	1	1	5
39	R142	P013	-3	-0.9	-1.3	3.7	33	43	54	60	6	2.4	-1.7	41	3.6	-0.7	-1	0.9	0.7	\$54	23	39	27	22	23	26	23	38	30	5	2	2	4
40	S33	K0182	2.2	1.7	-2.6	3.9	38	53	75	90	7	2.7	-4.3	54	5.1	-0.8	-1.1	1.9	0.3	\$87	26	38	30	24	25	25	24	38	32	4	1	1	6
41	S44	M222	2.1		-1.8	3.7	32	45	60	63	4	1.4		42	2.7	-0.8	-1	1	0.5	\$59	24	39	27	23	24	27	23	39	33	4	2	1	6
42	S72	M100	-5.7	-0.8	-1	5.4	36	55	75	98	3	1.9	0.3	48	4	-1.1	-1.5	1.2	0.6	\$54	26	39	30	23	24	26	24	39	32	5	2	1	7
43	S78	M18	2.6	1.2	-2.1	3.6	35	41	55	58	10	2	-1.5	43	4.6	-1.2	-1.5	2.1	-0.1	\$62	26	38	30	23	24	26	24	38	33	5	3	2	6
44	S98	P23	4.4		-2.5	1	24	37	51	67	7	1.4		43	3.9	1	1.4	-0.4	1.3	\$68	25	36	29	23	24	26	24	38	32	5	2	1	6
45	S104	Q027	1	-0.5	-2.2	4.3	39	52	68	63	3	2	-2.1	46	3.7	0.2	0.3	0.4	1	\$77	27	37	30	22	23	25	23	38	31	4	2	2	4
46	S108	L13	-4.3		0.6	4.4	30	40	49	36				37		-1.2	-1.3	1.2	0.3		29	38	32	24	25	26	23	38	30	4	3	2	5
47	S139	L13	0.8		-0.9	2.1	27	36	45	37	7			40		-0.7	-0.7	1	0.5	\$43	28	37	32	24	25	25	24	38	31	4	2	2	5
48	S149	Q0195	-2.4	1.9	-2.5	4.8	40	50	64	50	12	1.7	-0.2	44	4.5	-0.5	-0.9	1.2	0.7	\$59	24	38	28	23	24	26	24	38	32	5	3	1	5
49	S152	P013	-1.2	0.7	-3.8	2.8	38	47	57	55	9	2.4		46	3.9	0.2	0.3	0.6	1	\$64	22	38	26	23	22	27	23	38	34	4	1	2	4
50	S169	L0247	-1.8		-0.9	4.8	38	45	64	64	-1	1.8		45	2.8	-0.4	-0.5	0.4	0.9	\$55	25	38	28	24	25	26	24	39	32	4	3	2	7

*BASED ON RESULTS FROM JULY 2022 GROUP BREEDPLAN

Top 5% EBVs and Indices Top 10% EBVs and Indices Top 30% EBVs and Indices MCW less than 600 day growth

LOT 37 WEEBOLLABOLLA RUM R76 (DR) (P) (RED LITTLE WHITE)

BORN:	22/07/2020	WEEBOLLABOLLA LOMU L8 (P) (AI) (ROAN)	WEEBOLLABOLLA GILMOUR G508 (P) (RED)
COLOUR:	Red Little White	SIRE: WEEBOLLABOLLA PISTON P24 (P) (AI) (RLW)	DAM: WEEBOLLABOLLA ZOOROPA K335 (DR) (P) (RED)
IDENTITY:	AGFR76	WEEBOLLABOLLA ALLPASS M326 (P) (RED)	WEEBOLLABOLLA ZOOROPA F488 (DR) (P) (RED)

TRAITS OBSERVED: CE,BWT,200WT,600WT(X2),SS,FAT,EMA,IMF

JULY 2022 PERFORMANCE HERDS AUSTRALIA BREEDPLAN

CED	CEM	GL	BW	200	400	600	MCW	MILK	SS	DTC	CWT	EMA	RIB	P8	RBY	IMF	Index
+2.1		-1.2	+2.0	+19	+32	+41	+49	-1	+2.1		+33	+3.0	-0.5	-0.5	+0.8	+0.6	+\$55
30%		39%	71%	67%	59%	+41	46%	33%	39%		47%	31%	42%	41%	39%	35%	
Structural Assessment		Stature	Capacity	Body Length	Front Feet	Back Feet	Leg Angle	Pastern Angle	Muscle	Do-ability	Sheath	Hair Type	Docility	Grade	Scrotal 6/6/22		
		24	37	27	23	24	25	24	37	31	4	2	1	4	37		

Rum R76 commentary is very similar to Lot 36.

LOT 37 PURCHASER:

NOTES:

\$

LOT 38 WEEBOLLABOLLA REYNOLDS R75 (P) (RED)

HOMOZYGOUS POLL *zoetis*

BORN:	22/07/2020	WEEBOLLABOLLA LOMU L8 (P) (AI) (ROAN)	THE GROVE G0377 (P) (RED)
COLOUR:	Red	SIRE: WEEBOLLABOLLA PEARSALL P41 (P) (AI) (RED)	DAM: WEEBOLLABOLLA BEAUTY L10 (P) (AI) (RED)
IDENTITY:	AGFR75	WEEBOLLABOLLA AGGIE M152 (P) (ROAN)	WEEBOLLABOLLA BEAUTY J111 (P) (RED)

TRAITS OBSERVED: CE,BWT,200WT(X2),400WT,600WT(X2),SS,FAT,EMA,IMF

JULY 2022 PERFORMANCE HERDS AUSTRALIA BREEDPLAN

CED	CEM	GL	BW	200	400	600	MCW	MILK	SS	DTC	CWT	EMA	RIB	P8	RBY	IMF	Index
-4.8	-4.1	-1.5	+6.8	+51	+68	+82	+80	+10	+1.9	-3.3	+52	+3.1	+0.5	0.7	-0.1	+0.7	+\$59
37%	27%	48%	74%	70%	68%	+82	59%	42%	71%	29%	59%	47%	56%	54%	53%	45%	
Structural Assessment		Stature	Capacity	Body Length	Front Feet	Back Feet	Leg Angle	Pastern Angle	Muscle	Do-ability	Sheath	Hair Type	Docility	Grade	Scrotal 6/6/22		
		21	40	25	22	23	26	24	40	32	5	1	1	5	38		

Homozygous poll. Reynolds R75 has a beautiful skin, awesome topline and growth in a medium frame. Note DTC top 1%, 200DW and 600DW.

LOT 38 PURCHASER:

NOTES:

\$

LOT 39 WEEBOLLABOLLA RAWHIDE R142 (P) (RED & WHITE)

BORN:	26/08/2020	TURANVILLE INFORMER K57 (P) (AI) (RED LITTLE WHITE)	WEEBOLLABOLLA ALCAPONE A96 (P) (RED LITTLE WHITE)
COLOUR:	Red & White	SIRE: TURANVILLE P13 (P) (AI) (ROAN)	DAM: WEEBOLLABOLLA JACQUIE G163 (P) (AI) (RED)
IDENTITY:	AGFR142	TURANVILLE RIDDLE G65 (P) (AI) (ROAN)	WEEBOLLABOLLA JACQUIE D313 (P) (ROAN)

TRAITS OBSERVED: CE,200WT(X2),600WT(X2),SS,FAT,EMA,IMF

JULY 2022 PERFORMANCE HERDS AUSTRALIA BREEDPLAN

CED	CEM	GL	BW	200	400	600	MCW	MILK	SS	DTC	CWT	EMA	RIB	P8	RBY	IMF	Index
-3.0	-0.9	-1.3	+3.7	+33	+43	+54	+60	+6	+2.4	-1.7	+41	+3.6	-0.7	-1.0	+0.9	+0.7	+\$54
36%	28%	46%	63%	69%	64%	+54	58%	42%	69%	32%	57%	46%	54%	54%	51%	44%	
Structural Assessment		Stature	Capacity	Body Length	Front Feet	Back Feet	Leg Angle	Pastern Angle	Muscle	Do-ability	Sheath	Hair Type	Docility	Grade	Scrotal 6/6/22		
		23	39	27	22	23	26	23	38	30	5	2	2	4	37		

A very balanced bull, Rawhide R142 will complement any herd.

LOT 39 PURCHASER:

NOTES:

\$

LOT 40 WEEBOLLABOLLA SHEEHAN S33 (P) (AI) (ET) (RED)

BORN:	13/07/2021	WEEBOLLABOLLA GOODAR G105 (P) (AI) (RED & WHITE)	YAMBURGAN OSSIE G10 (P) (P) (RED)
COLOUR:	Red	SIRE: THE GROVE K0182 (P) (RED)	DAM: WEEBOLLABOLLA QUILT J155 (P) (RED)
IDENTITY:	AGFS33	THE GROVE F526 (P) (RED)	WEEBOLLABOLLA QUILT Z79 (P) (RED)

TRAITS OBSERVED: BWT,200WT,DOC

JULY 2022 PERFORMANCE HERDS AUSTRALIA BREEDPLAN

CED	CEM	GL	BW	200	400	600	MCW	MILK	SS	DTC	CWT	EMA	RIB	P8	RBY	IMF	Index
+2.2	+1.7	-2.6	+3.9	+38	+53	+75	+90	+7	+2.7	-4.3	+54	+5.1	-0.8	-1.1	+1.9	+0.3	+\$87
45%	36%	52%	75%	66%	63%	+75	58%	52%	53%	34%	54%	43%	49%	49%	47%	45%	

Structural Assessment	Stature	Capacity	Body Length	Front Feet	Back Feet	Leg Angle	Pastern Angle	Muscle	Do-ability	Sheath	Hair Type	Docility	Grade	Scrotal 12/09/22
		26	38	30	24	25	25	24	38	32	4	1	1	6

Dam Quilt J155 was selected as a donor for her excellent performance across all traits meat quality, fertility and growth - we are very pleased with this joining. DW's overall grade being 6.

LOT 40 PURCHASER:

NOTES:

\$

LOT 41 WEEBOLLABOLLA SPRY S44 (P) (AI) (ET) (RED LITTLE WHITE)

BORN:	14/07/2021	MURIDALE THERMAL ENERGY 15A (P) (RED)	THE GROVE J0598 (P) (ROAN)
COLOUR:	Red Little White	SIRE: SPRYS BOOM TIME M222 (P) (AI) (RED)	DAM: WEEBOLLABOLLA CHA CHA L5 (P) (AI) (ROAN)
IDENTITY:	AGFS44	SPRYS PATENTS CHERRY J90 (P) (AI) (ROAN)	WEEBOLLABOLLA CHA CHA J67 (P) (RED)

TRAITS OBSERVED: BWT,200WT,DOC

JULY 2022 PERFORMANCE HERDS AUSTRALIA BREEDPLAN

CED	CEM	GL	BW	200	400	600	MCW	MILK	SS	DTC	CWT	EMA	RIB	P8	RBY	IMF	Index
+2.1		-1.8	+3.7	+32	+45	+60	+63	+4	+1.4		+42	+2.7	-0.8	-1.0	+1.0	+0.5	+\$59
30%		42%	69%	63%	54%	+60	44%	31%	33%		41%	27%	35%	35%	33%	31%	

Structural Assessment	Stature	Capacity	Body Length	Front Feet	Back Feet	Leg Angle	Pastern Angle	Muscle	Do-ability	Sheath	Hair Type	Docility	Grade	Scrotal 12/09/22
		24	39	27	23	24	27	23	39	33	4	2	1	6

Dam Cha Cha L5 was selected as a donor for her high capacity and incredible volume. Spry S44 oozes Stud Sire potential. Boom Time M222 has less data analyzed on ABRI - progeny EBVs will improve. Scan data will be collected 12/09/2022.

LOT 41 PURCHASER:

NOTES:

\$

LOT 42 WEEBOLLABOLLA SHEPHERD S72 (P) (AI) (RED LITTLE WHITE)

BORN:	20/07/2021	WEEBOLLABOLLA JACKPOT J87 (S) (RED)	THE GROVE J0993 (P) (RED)
COLOUR:	Red Little White	SIRE: WEEBOLLABOLLA MUNRO'S LUCK M100 (P) (AI) (R)	DAM: WEEBOLLABOLLA VICTORIA M308 (P) (RED)
IDENTITY:	AGFS72	WEEBOLLABOLLA CHA CHA H71 (P) (AI) (RED)	WEEBOLLABOLLA VICTORIA H348 (P) (AI) (R&W)

TRAITS OBSERVED: CE,BWT,200WT,DOC

JULY 2022 PERFORMANCE HERDS AUSTRALIA BREEDPLAN

CED	CEM	GL	BW	200	400	600	MCW	MILK	SS	DTC	CWT	EMA	RIB	P8	RBY	IMF	Index
-5.7	-0.8	-1.0	+5.4	+36	+55	+75	+98	+3	+1.9	+0.3	+48	+4.0	-1.1	-1.5	+1.2	+0.6	+\$54
38%	28%	47%	75%	71%	65%	+75	56%	46%	51%	29%	54%	40%	49%	49%	46%	44%	

Structural Assessment	Stature	Capacity	Body Length	Front Feet	Back Feet	Leg Angle	Pastern Angle	Muscle	Do-ability	Sheath	Hair Type	Docility	Grade	Scrotal 12/09/22
		26	39	30	23	24	26	24	39	32	5	2	1	7

Outstanding Munro's Luck M100 son, exceptional top line and plenty of volume. DW graded as a 7 - impressive bull.

LOT 42 PURCHASER:

NOTES:

\$

LOT 43 WEEBOLLABOLLA STEAD S78 (P) (RED LITTLE WHITE)

BORN:	21/07/2021	YAMBURGAN ZEUS H140 (P) (P) (RED)	THE GROVE K0182 (P) (RED)
COLOUR:	Red Little White	SIRE: WEEBOLLABOLLA MURTONGA M18 (P) (AI) (RED)	DAM: WEEBOLLABOLLA CAROL P235 (P) (RED)
IDENTITY:	AGFS78	WEEBOLLABOLLA NINDETHANA K200 (P) (RED)	WEEBOLLABOLLA CAROL F219 (P) (RED)

TRAITS OBSERVED: CE,BWT,200WT,DOC

JULY 2022 PERFORMANCE HERDS AUSTRALIA BREEDPLAN

CED	CEM	GL	BW	200	400	600	MCW	MILK	SS	DTC	CWT	EMA	RIB	P8	RBY	IMF	Index
+2.6	+1.2	-2.1	+3.6	+35	+41	+55	+58	+10	+2.0	-1.5	+43	+4.6	-1.2	-1.5	+2.1	-0.1	+\$62
38%	27%	48%	74%	71%	64%	+55	56%	42%	50%	28%	54%	40%	50%	50%	48%	45%	

Structural Assessment	Stature	Capacity	Body Length	Front Feet	Back Feet	Leg Angle	Pastern Angle	Muscle	Do-ability	Sheath	Hair Type	Docility	Grade	Scrotal 12/09/22
	26	38	30	23	24	26	24	38	33	5	3	2	6	

A great cross of genetics here. Murtonga M18 does it again with his consistency stamp.

LOT 43 PURCHASER: _____ NOTES: _____
\$ _____

LOT 44 WEEBOLLABOLLA SIPPLE S98 (P) (ROAN)

BORN:	25/07/2021	WEEBOLLABOLLA LIGNUM L14 (P) (AI) (ROAN)	THE GROVE TERABYTES M0661 (P) (AI) (RED)
COLOUR:	Roan	SIRE: WEEBOLLABOLLA PADDINGTON P23 (P) (AI) (RED)	DAM: WEEBOLLABOLLA QUILT Q75 (P) (ROAN)
IDENTITY:	AGFS98	WEEBOLLABOLLA FANCY M132 (P) (RED)	WEEBOLLABOLLA QUILT M181 (P) (RED)

TRAITS OBSERVED: CE,BWT,200WT,DOC

JULY 2022 PERFORMANCE HERDS AUSTRALIA BREEDPLAN

CED	CEM	GL	BW	200	400	600	MCW	MILK	SS	DTC	CWT	EMA	RIB	P8	RBY	IMF	Index
+4.4		-2.5	+1.0	+24	+37	+51	+67	+7	+1.4		+43	+3.9	+1.0	+1.4	-0.4	+1.3	+\$68
32%		37%	60%	67%	59%	+51	50%	34%	44%		50%	34%	43%	\$68	41%	37%	

Structural Assessment	Stature	Capacity	Body Length	Front Feet	Back Feet	Leg Angle	Pastern Angle	Muscle	Do-ability	Sheath	Hair Type	Docility	Grade	Scrotal 12/09/22
	25	36	29	23	24	26	24	38	32	5	2	1	6	

Yes please we definitely want more of this IMF thanks Sipple S98. A good looking yearling. We're hoping his IMF EBV will improve after scan data analyzed. Stay tuned.

LOT 44 PURCHASER: _____ NOTES: _____
\$ _____

LOT 45 WEEBOLLABOLLA STIRLING S104 (P) (RED)

BORN:	28/07/2021	TURANVILLE SENATOR L6 (P) (AI) (ROAN)	YAMBURGAN OSSIE G10 (P) (P) (RED)
COLOUR:	Red	SIRE: TURANVILLE MINISTER Q27 (P) (ROAN)	DAM: WEEBOLLABOLLA FIVER M300 (P) (RED)
IDENTITY:	AGFS104	TURANVILLE ENTHUSIAST L59 (P) (AI) (RED LITTLE WHITE)	WEEBOLLABOLLA FIVER F307A (P) (RED)

TRAITS OBSERVED: CE,BWT,200WT,DOC

JULY 2022 PERFORMANCE HERDS AUSTRALIA BREEDPLAN

CED	CEM	GL	BW	200	400	600	MCW	MILK	SS	DTC	CWT	EMA	RIB	P8	RBY	IMF	Index
+1.0	-0.5	-2.2	+4.3	+39	+52	+68	+63	+3	+2.0	-2.1	+46	+3.7	+0.2	+0.3	+0.4	+1.0	+\$77
37%	27%	46%	73%	69%	62%	+68	51%	41%	45%	26%	50%	35%	44%	44%	42%	38%	

Structural Assessment	Stature	Capacity	Body Length	Front Feet	Back Feet	Leg Angle	Pastern Angle	Muscle	Do-ability	Sheath	Hair Type	Docility	Grade	Scrotal 12/09/22
	27	37	30	22	23	25	23	38	31	4	2	2	4	

The first Minister Q27 progeny, a bull purchased to assist with IMF promotion without compromising other traits. Stirling S104 looks promising.

LOT 45 PURCHASER: _____ NOTES: _____
\$ _____

LOT 46 WEEBOLLABOLLA SUTHERLAND S108 (P) (RED)

BORN:	29/07/2021	SOUTHCOTE HERO H1 (P) (RED)	WEEBOLLABOLLA SIRE
COLOUR:	Red	SIRE: SOUTHCOTE LEADFOOT L13 (S) (RED LITTLE WHITE)	DAM: WEEBOLLABOLLA DILLONS NICOLA N1043 (P) (RED)
IDENTITY:	AGFS108	SOUTHCOTE J22(P) (RED LITTLE WHITE)	DILLON COW

TRAITS OBSERVED: BWT,200WT,DOC

JULY 2022 PERFORMANCE HERDS AUSTRALIA BREEDPLAN

CED	CEM	GL	BW	200	400	600	MCW	MILK	SS	DTC	CWT	EMA	RIB	P8	RBY	IMF	Index
-4.3		+0.6	+4.4	+30	+40	+49	+36				+37		-1.2	-1.3	+1.2	+0.3	
27%		36%	70%	66%	55%	+49	45%				41%		32%	32%	29%	26%	
Structural Assessment		Stature	Capacity	Body Length	Front Feet	Back Feet	Leg Angle	Pastern Angle	Muscle	Do-ability	Sheath	Hair Type	Docility	Grade	Scrotal 12/09/22		
		29	38	32	24	25	26	23	38	30	4	3	2	5			

We scanned a large contemporary group of our commercial N heifers, and selected the best performers Noodar N450 is one of these - her son Sutherland S108 will have plenty of punch thanks to his Leadfoot L13 Sire.

LOT 46 PURCHASER:

NOTES:

\$

LOT 47 WEEBOLLABOLLA SONG S139 (P) (RED)

BORN:	04/08/2021	SOUTHCOTE HERO H1 (P) (RED)	YAMBURGAN EMPEROR L63 (P) (AI) (RED)
COLOUR:	Red	SIRE: SOUTHCOTE LEADFOOT L13 (S) (RED LITTLE WHITE)	DAM: WEEBOLLABOLLA BUSH BALLAD P151 (P) &W)
IDENTITY:	AGFS139	SOUTHCOTE J22(P) (RED LITTLE WHITE)	WEEBOLLABOLLA BUSH BALLAD H129 (P) (ROAN)

TRAITS OBSERVED: BWT,200WT,DOC

JULY 2022 PERFORMANCE HERDS AUSTRALIA BREEDPLAN

CED	CEM	GL	BW	200	400	600	MCW	MILK	SS	DTC	CWT	EMA	RIB	P8	RBY	IMF	Index
+0.8		-0.9	+2.1	+27	+36	+45	+37	+7			+40		-0.7	-0.7	+1.0	+0.5	
31%		40%	73%	68%	58%	+45	47%	30%			44%		35%	35%	33%	30%	+\$43
Structural Assessment		Stature	Capacity	Body Length	Front Feet	Back Feet	Leg Angle	Pastern Angle	Muscle	Do-ability	Sheath	Hair Type	Docility	Grade	Scrotal 12/09/22		
		28	37	32	24	25	25	24	38	31	4	2	2	5			

Another Leadfoot L13 son, Song S139 has a lot of presence.

LOT 47 PURCHASER:

NOTES:

\$

LOT 48 WEEBOLLABOLLA SULLIVAN S149 (H) (RED LITTLE WHITE)

BORN:	07/08/2021	THE GROVE A.B.M0673 (P) (AI) (ET) (RED)	WEEBOLLABOLLA GOODAR G105 (P) (AI) (RED & WHITE)
COLOUR:	Red Little White	SIRE: THE GROVE ASHES Q0195 (P) (AI) (RED)	DAM: WEEBOLLABOLLA VIGILANCE N9 (P) (AI) (RLW)
IDENTITY:	AGFS149	THE GROVE M0360 (P) (ROAN)	WEEBOLLABOLLA VIGILANCE L4003 (P) (AI) (ET) (RED)

TRAITS OBSERVED: CE,BWT,200WT,DOC

JULY 2022 PERFORMANCE HERDS AUSTRALIA BREEDPLAN

CED	CEM	GL	BW	200	400	600	MCW	MILK	SS	DTC	CWT	EMA	RIB	P8	RBY	IMF	Index
-2.4	+1.9	-2.5	+4.8	+40	+50	+64	+50	+12	+1.7	-0.2	+44	+4.5	-0.5	-0.9	+1.2	+0.7	
36%	29%	49%	73%	69%	62%	+64	52%	41%	48%	27%	51%	37%	46%	46%	44%	40%	+\$59
Structural Assessment		Stature	Capacity	Body Length	Front Feet	Back Feet	Leg Angle	Pastern Angle	Muscle	Do-ability	Sheath	Hair Type	Docility	Grade	Scrotal 12/09/22		
		24	38	28	23	24	26	24	38	32	5	3	1	5			

Sullivan S149 is the first progeny to be offered by Ashes Q0195, excellent head carriage with a balanced data set.

LOT 48 PURCHASER:

NOTES:

\$

LOT 49 WEEBOLLABOLLA SIMON S152 (P) (RED LITTLE WHITE)

BORN:	07/08/2021	TURANVILLE INFORMER K57 (P) (AI) (RED LITTLE WHITE)	WEEBOLLABOLLA LEISHMAN L34 (P) (AI) (RLW)
COLOUR:	Red Little White	SIRE: TURANVILLE P13 (P) (AI) (ROAN)	DAM: WEEBOLLABOLLA NOODAR N450 (P) (RED)
IDENTITY:	AGFS152	TURANVILLE RIDDLE G65 (P) (AI) (ROAN)	WEEBOLLABOLLA COW

TRAITS OBSERVED: BWT,200WT,DOC

JULY 2022 PERFORMANCE HERDS AUSTRALIA BREEDPLAN

CED	CEM	GL	BW	200	400	600	MCW	MILK	SS	DTC	CWT	EMA	RIB	P8	RBY	IMF	Index
-1.2	+0.7	-3.8	+2.8	+38	+47	+57	+55	+9	+2.4		+46	+3.9	+0.2	+0.3	+0.6	+1.0	+\$64
32%	25%	45%	71%	67%	59%	+57	50%	34%	43%		48%	34%	43%	43%	40%	36%	

Structural Assessment	Stature	Capacity	Body Length	Front Feet	Back Feet	Leg Angle	Pastern Angle	Muscle	Do-ability	Sheath	Hair Type	Docility	Grade	Scrotal 12/09/22
		22	38	26	23	22	27	23	38	34	4	1	2	4

An attractive mid-maturity genetic package. Simon S152 has a very quiet nature, slick skin and plenty of cover.

LOT 49 PURCHASER:

NOTES:

\$

LOT 50 WEEBOLLABOLLA STOCKMAN S169 (P) (RED)

BORN:	10/08/2021	THE GROVE F915 (P) (RED)	WEEBOLLABOLLA SIRE
COLOUR:	Red	SIRE: THE GROVE L0247 (P) (RED)	DAM: WEEBOLLABOLLA NERIDA N534 (P) (RED)
IDENTITY:	AGFS169	THE GROVE B582 (P) (AI) (RED)	WEEBOLLABOLLA COW

TRAITS OBSERVED: BWT,200WT,DOC

JULY 2022 PERFORMANCE HERDS AUSTRALIA BREEDPLAN

CED	CEM	GL	BW	200	400	600	MCW	MILK	SS	DTC	CWT	EMA	RIB	P8	RBY	IMF	Index
-1.8		-0.9	+4.8	+38	+45	+64	+64	-1	+1.8		+45	+2.8	-0.4	-0.5	+0.4	+0.9	+\$55
32%		41%	72%	68%	61%	+64	53%	39%	42%		51%	36%	46%	46%	43%	41%	

Structural Assessment	Stature	Capacity	Body Length	Front Feet	Back Feet	Leg Angle	Pastern Angle	Muscle	Do-ability	Sheath	Hair Type	Docility	Grade	Scrotal 12/09/22
		25	38	28	24	25	26	24	39	32	4	3	2	7

L0247 has done it again. Stockman S169 is out of a select group of N commercial heifers. DW graded him as a 7.

LOT 50 PURCHASER:

NOTES:

\$



BULL SALES

LOT 1 / R23



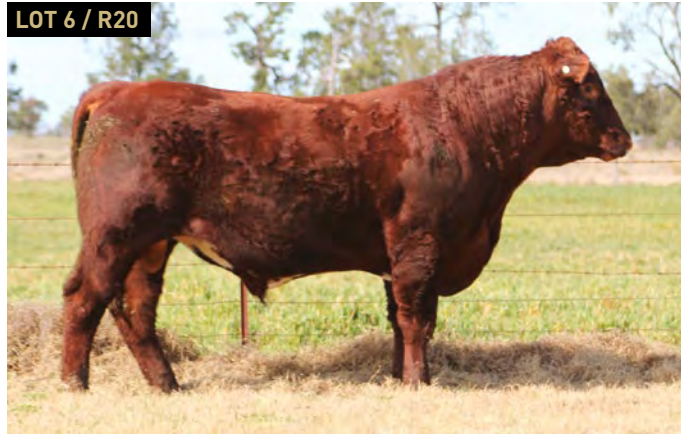
LOT 5 / R87



LOT 2 / R16



LOT 6 / R20



LOT 3 / R78



LOT 7 / R266



LOT 4 / R24



LOT 8 / R19



BULL SALES

LOT 9 / R66



LOT 15 / R45



LOT 10 / R98



LOT 16 / R133



LOT 11 / R44



LOT 17 / R21



LOT 13 / R39



LOT 18 / R81



BULL SALES

LOT 19 / R80



LOT 23 / R145



LOT 20 / R269



LOT 24 / R53



LOT 21 / R254



LOT 25 / R55



LOT 22 / R57



LOT 27 / R61



BULL SALES

LOT 28 / R140



LOT 34 / R134



LOT 29 / R11



LOT 35 / R144



LOT 30 / R34



LOT 37 / R130



LOT 31 / R27



LOT 39 / R142





IBMS Breeding Services Type and Structural Assessment



All bulls catalogued for this sale have been inspected and assessed on the IBMS Type/Structure system, by Dick Whale. They are all considered acceptable for structural soundness and muscling. Should you wish to discuss any bulls prior to the sale, please contact Dick on 0427 697 968, or consult Dick on sale day.

STRUCTURAL SOUNDNESS TRAITS

Feet: Evaluation of front and rear feet, with 25 being ideal. Scores lower than 25 exhibit some degree of scissor-claw. Scores greater than 25 tend to be open-clawed.

Rear Leg Set: Evaluation of rear leg set with 25 being ideal. Scores greater than 25 tend towards being sickle-hocked, less than 25 appear more post-legged.

Feet and Pasterns: Evaluation of the length and strength of the pastern and foot angle. Scores lower than 25 exhibit greater flexion of pastern, greater than 25 indicate stronger pasterns with more depth of heel.

DESCRIPTIVE TRAITS

Stature: Evaluation of bulls for maturity pattern and frame size. A stature score of less than 25 indicates smaller frame size and earlier maturity whilst scores higher than 25 are generally larger framed, later maturing cattle.

Capacity: Evaluation of capacity combines depth of rib, spring of rib, and chest floor width. Scores greater than 35 indicate bulls with greater capacity or stoutness.

Body Length: Evaluation of body length from point of shoulder to pin bone. Scores greater than 25 indicate longer body length.

Muscle Score: The muscularity of the bull devoid of subcutaneous fat. Higher scores indicate animals with greater yield of saleable meat.

Muscularity Score: 25 (C-) 30 (C) 35 (C+) 40 (B-) 45 (B) 50 (B+)

Do-ability: the ability of an animal to lay down fat compared to their contemporaries. 30 is average in sale bulls. Therefore, animals scored above 30 are easier doing.

Sheath Score: 5 is a bull with a tight sheath. 1 is a bull with a very pendulous sheath.

Hair Type Score: 1 = Short (slick hair type). 5 = Dense (unacceptable hair type)

Grade Score: 1 = Cull 2 = Just 3 = Below Average 4 = Average
5 = Above Average 6 & Higher = Best Bulls

HOW TO REGISTER with ELITE LIVESTOCK AUCTIONS

Welcome to the new age of selling livestock in Australia and "Happy Bidding"



-  1 Simply go to www.elitelivestockauctions.com.au using your desktop, laptop, iPad, iPhone or android device
-  2 Click on the "Sign Up" page / link
-  3 Create a bidding profile using the bidder registration page.
(You can either register as a livestock agent, company or private buyer.)
-  4 Agree to the Elite Livestock Auctions Terms & Conditions and the Selling Agents Sale Terms & Conditions as printed in the official Sale Catalogue
-  5 Click "Register"
-  6 You will then be notified by email that an account has been created

-  7 Once an account has been created you are all "Set to Bid"
-  8 Each auction can then be viewed by clicking "Live Auction" logo on the Elite Livestock Auctions website
-  9 Once you receive email notification that your account has been created please go to the sale you wish to bid at and click "Request to Bid"
-  10 The sale agents will then approve your application to bid and on the sale catalogue you will see "✓ Bid Request Approved"
-  11 On Sale day simply login, click "Enter Auction" on the catalogue page and you can start bidding.
(There is no need for software download)
-  12 At the completion of the auction, invoicing will be carried out as per your registration details by the Selling Agents.

Having trouble registering and logging in?
Contact Elite Livestock Auctions

1300 15 31 35

Elite Livestock Auctions ABN 19 604 627 607

📍 340 Curtin Avenue West, Eagle Farm QLD 4009

☎ 1300 15 31 35

📠 07 3041 5053

🌐 www.elitelivestockauctions.com.au

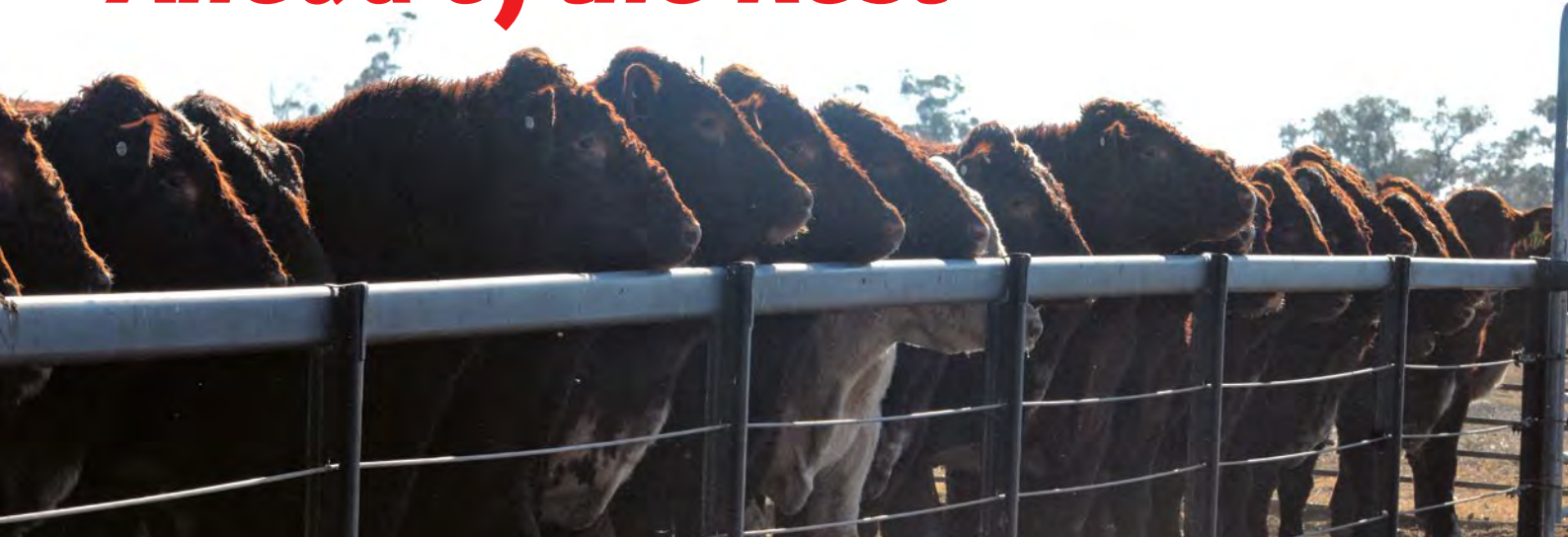


bja | Stock & Station Agents

Proudly Associated with
Weebollabolla Shorthorns

Ben Hiscox - 0429 669 313 | **Keiran te Velde** - 0427 669 097 | **Scott Fitzgerald** - 0455 669 310
Shop 2, 18 Sweaney Street Inverell NSW | Email: admin@bjassa.com.au | Phone: 02 6721 0477

Ahead of the Rest



Our national network offers a range of products and services tailored to the needs of primary producers including:

Cropping | Livestock & Wool | Dairy | Horticulture | Financial Services | Real Estate

Contact the livestock team who can help you access buyers across Australia

BRIAN KENNEDY M. 0427 844 047
LINCOLN McKINLAY M. 0419 239 963

BRUCE SHEPPARD M. 0428 531 883
PAUL JAMESON M. 0428 667 998
ANDREW MEARA M. 0427 210 634

BLAKE MUNRO M. 0428 862 469
MICHAEL SMITH M. 0428 541 711



PERCENTILE BANDS FOR 2020 BORN CALVES

Percentile Band	CE DIR (%)	CE DTRs (%)	GL (day)	BW (kg)	200 DW (kg)	400 DW (kg)	600 DW (kg)	MCW (kg)	Milk (kg)	SS (cm)	DTC (days)	Carc (kg)	EMA (sq. cm)	Rib Fat (mm)	Rump Fat (mm)	RBY (%)	IMF (%)	MSA-B2 (\$)	Docility
Top Value	+7.8	+5.4	-5.4	-2.6	+53	+82	+95	+111	+16	+4.3	-5.7	+74	+7.2	+2.5	+3.4	+3.9	+2.2	+102	+24.4
Top 1%	+6.5	+4.6	-4.3	-0.3	+47	+69	+82	+91	+14	+3.3	-4.1	+65	+6.2	+1.3	+1.9	+2.8	+1.7	+85	+20.4
Top 5%	+5.4	+3.8	-3.5	+0.6	+42	+59	+73	+81	+12	+2.8	-3.3	+56	+5.4	+0.8	+1.2	+2.1	+1.5	+79	+17.6
Top 10%	+4.6	+3.3	-3.2	+1.2	+39	+54	+68	+76	+12	+2.5	-2.7	+53	+5.0	+0.5	+0.8	+1.9	+1.3	+74	+15.7
Top 15%	+4.2	+2.8	-2.9	+1.6	+37	+52	+65	+72	+11	+2.4	-2.4	+51	+4.7	+0.3	+0.5	+1.7	+1.2	+72	+13.9
Top 20%	+3.6	+2.4	-2.7	+1.9	+36	+50	+63	+69	+10	+2.3	-2.1	+49	+4.6	+0.2	+0.3	+1.5	+1.1	+70	+12.0
Top 25%	+3.1	+2.1	-2.5	+2.1	+35	+48	+61	+66	+10	+2.2	-1.9	+47	+4.4	+0.0	+0.1	+1.4	+1.0	+68	+10.7
Top 30%	+2.7	+1.8	-2.4	+2.3	+34	+46	+59	+64	+9	+2.1	-1.7	+46	+4.3	-0.1	+0.0	+1.3	+1.0	+67	+9.0
Top 35%	+2.4	+1.5	-2.3	+2.5	+33	+45	+58	+62	+9	+2.0	-1.5	+45	+4.2	-0.2	-0.1	+1.2	+0.9	+66	+7.1
Top 40%	+2.1	+1.3	-2.1	+2.6	+32	+44	+56	+59	+8	+1.9	-1.3	+44	+4.1	-0.3	-0.3	+1.1	+0.8	+64	+5.7
Top 45%	+1.7	+1.1	-2.0	+2.8	+32	+43	+55	+57	+8	+1.9	-1.2	+43	+4.0	-0.4	-0.4	+1.0	+0.8	+62	+4.5
Top 50%	+1.4	+0.9	-1.9	+2.9	+31	+41	+53	+55	+8	+1.8	-1.0	+42	+3.9	-0.5	-0.5	+0.9	+0.7	+61	+3.1
Top 55%	+1.0	+0.7	-1.8	+3.1	+30	+41	+52	+52	+7	+1.8	-0.9	+41	+3.8	-0.5	-0.7	+0.9	+0.7	+60	+1.9
Top 60%	+0.7	+0.5	-1.7	+3.2	+29	+40	+50	+50	+7	+1.7	-0.7	+40	+3.7	-0.6	-0.8	+0.8	+0.6	+58	+0.3
Top 65%	+0.3	+0.3	-1.5	+3.4	+28	+38	+49	+47	+7	+1.6	-0.5	+39	+3.5	-0.7	-0.9	+0.7	+0.6	+57	-1.3
Top 70%	+0.0	+0.0	-1.4	+3.5	+28	+37	+47	+45	+6	+1.6	-0.4	+38	+3.4	-0.8	-1.0	+0.6	+0.5	+55	-3.3
Top 75%	-0.4	-0.3	-1.2	+3.7	+27	+36	+45	+43	+6	+1.5	-0.1	+37	+3.3	-0.9	-1.2	+0.5	+0.5	+53	-5.7
Top 80%	-0.9	-0.6	-1.1	+3.9	+25	+35	+43	+40	+5	+1.4	+0.1	+36	+3.1	-1.0	-1.3	+0.3	+0.4	+51	-8.6
Top 85%	-1.4	-1.1	-0.9	+4.1	+24	+33	+41	+37	+5	+1.3	+0.4	+35	+3.0	-1.2	-1.5	+0.1	+0.3	+48	-12.2
Top 90%	-2.4	-1.7	-0.7	+4.4	+22	+31	+38	+32	+4	+1.2	+0.7	+33	+2.8	-1.4	-1.8	+0.0	+0.2	+45	-17.6
Top 95%	-3.5	-2.5	-0.4	+4.8	+19	+26	+32	+25	+3	+0.9	+1.3	+30	+2.4	-1.6	-2.1	-0.3	+0.1	+40	-24.4
Top 99%	-7.3	-4.5	+0.2	+5.6	+14	+21	+24	+12	+2	+0.3	+2.7	+24	+1.6	-2.2	-2.8	-0.8	-0.2	+31	-37.1
Low Value	-16.5	-8.3	+1.4	+7.7	+9	+15	+16	-1	-1	-0.5	+4.0	+15	+0.7	-2.7	-3.5	-1.7	-0.6	+15	-43.6

EBVS - Estimated Breeding Values (EBVs) are the best estimate of an animal's genetic merit, for that trait, half of which will be passed on to its progeny.

CALVING EASE EBVS (%) - Based on calving difficulty scores, birth weights and gestation length information. More positive EBVs are favourable and indicate easier calving.

CE % DIRECT = DIRECT CALVING EASE - The EBV for direct calving ease indicates the influence of the sire on calving ease in purebred females calving at two years of age.

CE % DAUGHTERS = DAUGHTERS' CALVING EASE - The EBV for daughters' calving ease indicates how easily that sire's daughters will calve at two years of age.

GESTATION LENGTH EBV (DAYS) - An estimate of the time from conception to the birth of the calf and is based on Artificial Insemination and hand mating records. Lower (negative) Gestation Length EBVs indicate shorter gestation length and therefore easier calving and increased growth after birth.

BIRTH WEIGHT EBV (KG) - Based on the measured birth weight of progeny, adjusted for dam age. The lower the value the lighter the calf at birth.

200-DAY GROWTH EBV (KG) - Calculated from the weight of progeny taken between 80 and 300 days of age. Values are adjusted to 200 days and for age of dam.

400-DAY WEIGHT EBV (KG) - Calculated from the weight of progeny taken between 301 and 500 days of age, adjusted to 400 days and for age of dam.

600-DAY WEIGHT EBV (KG) - Calculated from the weight of progeny taken between 501 and 900 days of age, adjusted to 600 days and for age of dam.

MATURE COW WEIGHT EBV (KG) - Based on the cow weight when the calf is weighed for weaning, adjusted to 5 years of age.

MILK EBV (KG) - An estimate of an animal's milking ability. For sires, this EBV indicates the effect of the daughter's milking ability, inherited from the sire, on the 200-day weights of her calves. For dams, it indicates her milking ability.

SCROTAL SIZE EBV (CM) - Calculated from the circumference of the scrotum taken between 300 and 700 days of age and adjusted to 400 days of age.

CARCASE WEIGHT EBV (KG) - Based on abattoir carcass records and is an indicator of the genetic differences in carcass weight at the standard age of 650 days.

EYE MUSCLE AREA EBV (SQ CM) - Calculated from measurements from live animal ultrasound scans and from abattoir carcass data, adjusted to a standard 300kg carcass. This EBV estimates genetic differences in eye muscle area at the 12/13th rib site of a 300kg dressed carcass.

RIB FAT AND RUMP FAT EBVS (MM) - Calculated from measurements of subcutaneous fat depth at the 12/13 rib site and the P8 rump site (from live animal ultrasound scans and from abattoir carcasses) and are adjusted to a standard 300kg carcass.

RETAIL BEEF YIELD EBV (%) - Indicates genetic differences between animals for retail yield percentage in a standard 300 kg carcass.

INTRAMUSCULAR FAT EBV (%) - is an estimate of the genetic difference in the percentage of intramuscular fat (marbling) at the 12/13th rib site in a 300 kg carcass. Depending on market targets, larger more positive values are generally more favourable.

ACCURACY (%) - is based on the amount of performance information available on the animal and its close relatives - particularly the number of progeny analysed. Accuracy is also based on the heritability of the trait and the genetic correlations with other recorded traits. Hence accuracy indicates the 'confidence level' of the EBV. The higher the accuracy value the lower the likelihood of change in the animal's EBV as more information is analysed for that animal or its relatives. Even though an EBV with a low accuracy may change in the future, it is still the best estimate of an animal's genetic merit for that trait. As more information becomes available, an EBV is just as likely to increase in value, as it is to decrease.

**BEEF CLASS
STRUCTURAL ASSESSMENT SCORING SYSTEM**



Source: Angus Australia

CRITICAL MATING WEIGHTS

MLA recommendations for heifers reaching CMW¹

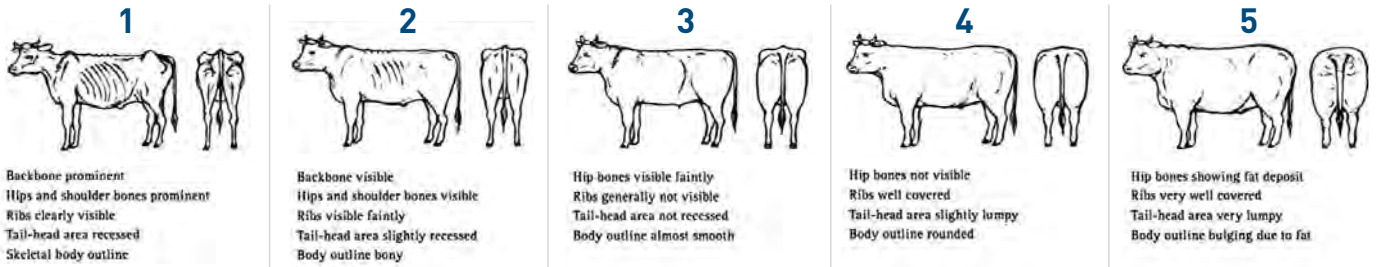
Weigh heifers every 6 weeks after weaning to achieve growth targets. Use the table below as a guide to minimum weights of weaner heifers at puberty.²

Frame Score	Weight at Puberty	Mating Weight at 15 Mths	Weight at 0-3 Mths Pregnancy	Weight at 4-6 Mths Pregnancy	Calving Weight at 24 Mths	Mature Weight
1	240	260	296	319	333	400
2	270	300	342	369	387	470
3	290	330	377	409	430	530
4	310	365	419	454	487	600
5	340	400	459	499	525	670

Adapted from Meat and Livestock Australia. More Beef from Pastures, Tool 5.^{1,2} All weights are expressed as kilograms.

References: ¹ More Beef from Pastures. Procedure 1: Maximise the number of live calves per female. 2013. Meat and Livestock Australia. ² More Beef from Pastures. Minimum liveweights of weaner heifers. 2013. Meat and Livestock Australia.

CONDITION SCORES



Source: dial.nid.gov.au





L TO R: JEN, KIRST, TREEN, JAC, SANDY AND JUDE.

THANK YOU

On behalf of the team at Weebollabolla thank you for attending our sale. Your support is greatly appreciated and we wish you well with your purchases.

We look forward to seeing you next year for our 56th Sale.

**Thank you Sandy, Jen, the Munro Family
and the team at Weebollabolla**



WEEBOLLABOLLA ANNUAL BULL SALE 2021





WEEBOLLABOLLA CONTACT

PHONE 02 6752 2319 / weebollabolla.com.au / Follow us  